

  
**DRAKE**<sup>TM</sup>  
**OFF ROAD**

*Bronco*



**2010** WHOLESALE CATALOG  
**BRONCO**  
1966-1977 FORD BRONCO PARTS

**FORD BRONCO**  
**1966-77 Bronco Parts & Accessories**  
**WHOLESALE CATALOG**  
**2010**



130 CASSIA WAY  
HENDERSON, NEVADA 89014-6615

*Phone:* **702-853-2060**

*Toll Free:* **800-999-0289**

*FAX:* **702-853-2062**

*e-mail:* ***sales@scottdrake.net***

*website:* ***www.DrakeOffRoad.com***



# THE FORD TRADEMARK LICENSING PROGRAM



Official Licensed Product

Drake Automotive Group is proud to be an approved "Official Licensed Products Supplier". Drake Automotive Group meets the rigid quality standards and regulations of the Ford Motor Company. We work close with Ford to bring the most accurate reproduction to you. Maintaining this strong relationship is crucial to the integrity of our market.

Substandard parts from non-approved, illegal sources may still be available, but keep in mind that Purchasing non Ford approved trademarked items is a violation of the Registered Trademark laws. You could be prosecuted and your parts confiscated. Therefore, buyers should be aware of inferior parts at reduced prices.

So, look for the "Official Licensed Product" Logo on our trademarked products, because with it, you are assured quality and support.



## THE DRAKE AUTOMOTIVE GROUP GUARANTEE

# 100% Complete Satisfaction!

### "Hands Free Guarantee"

Selling Drake Automotive Group Parts is easier than ever. We stand behind every part we package and will gladly exchange any defective part, no questions asked. We will ship out the new part to your customer at our cost, so your hands are washed free of any work. We stand behind our parts 100%, so you can run your business with pride.

# simple

\* Product must be returned within 30 days of purchase, and product must be undamaged in resalable condition.

# MAKING THE COMMITMENT TO YOU!

As we continue to evolve as America's largest Mustang wholesale distributor, it maintains a priority to uphold the ideals that got us here. We're excited about the direction our collective energy takes us each day and look forward to growing with you through the next year. Outlined below are responsibilities which Drake Automotive Group must pursue to deserve your business.

## QUALITY

Each part we produce or distribute must meet the quality standards you expect and deserve. We use only the highest esteemed mold makers, die casters and chrome platers. We know you demand quality and it's a priority to meet your needs everyday.

## SELECTION

As you utilize our new catalog to get the parts you need, you will find we have compiled the most extensive collection of Classic Mustang parts anywhere. Shop with confidence, our descriptions and applications are accurate and concise.

## SERVICE

As a valued Drake Automotive Group customer you deserve the most helpful and understanding staff in the industry. It is important to us that professionalism be presented in all aspects of customer service. From an order to a return, technical question to a problem, Drake Automotive Group takes pride in assisting your needs.

## FULFILLMENT

Maintaining a 90% fulfillment rate continues to be a priority at Drake Automotive Group. As we continue to find new ways to utilize our state of the art computer network, we foresee our fill rates will only go up until we reach perfection.

## PRICE

Obviously price is an issue. In some cases shopping around might save you a quarter or two on lower quality product. We price very competitively. Maintaining the highest quality parts and lowest margins demand consideration. Having all the parts you need in one catalog, one order, one delivery, we know, will save you more money. Your time, your phone bills and multiple delivery charges will cost you more in the long run. Prices are subject to change without notice. Please refer to our website for current pricing.

## DELIVERY

Our goal is to ship all orders within 24 hours, however not always possible. Please know that we take every order seriously and do our best to expedite it as quickly as possible. Last year we furthered our relationship with Americas largest carrier, U.P.S., by upgrading our computer system and networking directly with them. Processing, shipping and tracking was streamlined while accuracy improved. Delivering your order is easier, faster and more precise than ever.



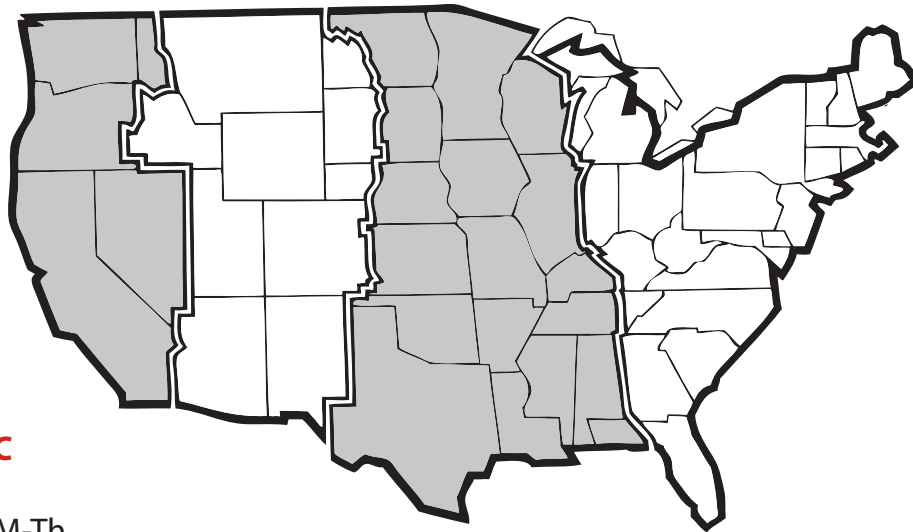
Merchandise with this symbol indicates it can only be shipped by truck.



Merchandise with this symbol indicates it cannot be shipped by air.

**Call us toll free: 800-999-0289**

## **OUR BUSINESS HOURS IN YOUR TIME ZONE**



### **PACIFIC TIME**

7:45 - 5:00 M-Th  
7:45 - 4:30 Fri

### **MOUNTAIN TIME**

8:45 - 6:00 M-Th  
8:45 - 5:30 Fri

### **CENTRAL TIME**

9:45 - 7:00 M-Th  
9:45 - 6:30 Fri

### **EASTERN TIME**

10:45 - 8:00 M-Th  
10:45 - 7:30 Fri

### Product and Pricing Information

We make every effort to produce a catalog with accurate information. Our goal is to provide the best quality product available, at the best value. **Prices are subject to change at anytime, without notice.** Product descriptions, part numbers and specifications were accurate when printed, but may change without notice. Make sure to confirm availability and price when placing orders.

### Artwork/Photography

All product photography and images contained in this publication are meant for reference only and may not be an accurate representation of the actual products (unless otherwise stated). For specific questions about build, fit, application, finish, etc., please contact your Drake Automotive Group sales representative during normal business hours.

### Copyright

All information contained in this Drake Automotive Group catalog and website is copyrighted. No part may be reproduced without prior permission of Drake Automotive Group. All photos, information and statements within this catalog and on our website are based on information believed to be accurate, but no accuracy is guaranteed.

**SAVE ON  
C.O.D. CHARGES  
BY CHARGING  
ORDERS ON YOUR  
CREDIT CARD**





# POLICIES

## Our Guarantee

Every item in this catalog is the very best quality available. If, for any reason, you are not satisfied with the quality of an item, please return it within thirty days from the invoice date for a full credit, exchange or refund. Some manufacturers issue their own warranties and in all cases these warranties will apply.

## Terms

All new accounts are C.O.D., credit card or pre-pay only. Please make checks payable to Drake Automotive Group. Each C.O.D. is subject to an additional fee per shipment. In the event three checks are returned unpaid for any reason, the account will be placed on cash, credit card or cashiers check only terms for a time period of our discretion.

## Ordering

Please use our part numbers to ensure accuracy. Automated ordering at [www.scottdrake.net/dealer.site/](http://www.scottdrake.net/dealer.site/) is available twenty-four hours a day. Telephone orders may be placed Monday through Thursday 7:45 a.m. until 5:30 p.m. and Friday 7:45 a.m. until 4:30 p.m. Pacific Time. Orders may also be faxed at any time.

Orders totaling less than \$50.00 will be subject to a minimum order service charge of \$3.50. Drop ship orders are subject to a \$3.50 service charge and must be either pre-paid or charged to a credit card. Drop ship orders are shipped with no invoice. Once an order is placed, no further items can be added to the order.

Special orders will be placed for items we can supply, but are not regular stocking items. You will need to fax an order to your salesperson detailing your specific need. In most cases, these orders need to be prepaid. In ALL cases, these items are not returnable.

## Backorders

While we strive to have as many items as possible in stock, some backorders will be unavoidable. Should an item not be in stock when ordered, you will be notified when it becomes available. Backorders are automatically cancelled 30 days after they become available.

## Shipping

Orders are generally shipped within twenty-four hours of being placed. Orders placed by noon with expedited delivery will leave the same day; after 12 noon, the order will leave the next day.

All orders are shipped via FedEx, unless specified otherwise. On all shipments, shipping charges will be added to your invoice accordingly. FedEx orders are shipped with tracking numbers and are insured for full value. Contact Drake Automotive Group Customer Service regarding damages and insurance claims.

Packages measuring larger than 84" in length and width are classified by FedEx as oversize 1 (OS1) and will be billed at 30 pounds, although the actual weight may be less. Packages measuring larger than 108" in length and width are classified by FedEx as oversize 2 (OS2) and will be billed at 70 pounds, although the actual weight may be less.

Drake Automotive Group offers many levels of expedited service. These premium levels are charged a premium price. Some services are not available in all areas. Services offered include:

- Red Label Early A.M. – Next business morning between 8 A.M. and 8:30 A.M.
- Red Label – Next business day between 10:30 A.M. and 5:00 P.M.
- Red Label Saver – Next business day between 3:00 P.M. and 4:30 P.M.
- Red Label/Saturday Delivery – Saturday delivery of package. Saturday deliveries have additional surcharges.
- Blue Label A.M. – Delivery of package by noon of second business day
- Blue Label – Delivery of package by end of second business day
- 3 Day Select – Delivery of package by end of third business day
- 100 Weight – Special discounted billing rate for orders that weigh over 200 lbs by either physical weight, dimensional weight (OS1, OS2) or a combination of both.

All items exceeding size limitations for oversize 2 or very large orders of heavy items will ship via common carrier (truck freight). Product shipped via common carrier cannot be shipped C.O.D. Please specify your choice of carrier when requesting truck freight.

The United States Postal Service may be requested as an alternate shipping method. The following guidelines apply to all shipments when the Postal Service is requested.

- Shipping via the Postal Service is available on orders only when the customer specifically requests it.
- Drake Automotive Group MUST receive all orders no later than Tuesday 5 PM Pacific Time.
- Orders placed by 5 PM on Tuesday will be processed and shipped no later than Thursday of the same week.
- Drake Automotive Group cannot be responsible for lost, damaged or delayed Postal Service shipments.
- Postal Service shipments are unable to be tracked and have NO delivery guarantees.
- Postal limits on size and weight vary, based on destination. Please check with your salesperson regarding these restrictions.

Orders may be picked-up at our facility with appropriate lead-time. All will call orders must be placed a minimum of 24 hours prior to the desired pick-up time. All will call orders must be picked up within 14 days of stated pick-up time or they will be returned to stock with a 20% restock fee being charged.

### International Orders

All international orders must be pre-paid in U.S. currency by credit card, cashiers check or wire transfer.

Drake Automotive Group strongly encourages all international dealers to establish an account with a shipper that can bill them directly. This will frequently result in more economical shipping charges for the dealer.

For all orders being shipped to a holding station or freight forwarder, we must be provided with correct and complete address, contact person and phone and fax numbers for the facility. Our liability for shortages on orders of this type end when your agent signs for the delivery.

Items on international orders, including Mexico and Canada, that are out of stock will automatically be deleted from your order by our shipping department. This is due to varying customs regulations and shipping costs involved with shipping this type of order. Please note any out of stock items so you are able to reorder.

### Returns and Exchange Policy

All returns require an RMA number (Returned Materials Authorization). The RMA number must be displayed prominently on the shipping carton, near the shipping label. Packages received with no RMA number on the carton, may be refused by our Returns Department and returned via freight collect. All return/exchange shipments must be sent prepaid, as we cannot accept return C.O.D.'s.

Returned goods will be accepted up to 30 days from date of invoice. Returns exceeding 30 days, but less than 60 days will be charged a 20% restocking fee. Returns exceeding 60 days will be handled on a case-by-case basis.

Returned items must be uninstalled, in resalable condition. Electrical items are not returnable unless they are unopened, in their original packaging. If product must be repackaged, the return may be subject to an additional repackaging fee as well. If the item shows signs of being installed, or is not resalable, no credit will be received and the product will be returned freight collect.

Return freight charges will only be reimbursed if a defective or incorrect item was shipped to you. In all other instances, freight charges will not be reimbursed.

In most cases, the customer will be asked to provide prepaid, return freight. In no instance will a call tag be issued for unwanted parts, regular return freight or damaged goods. Call tags will be issued only in the case of a sales or shipping error. Only prepaid shipments will be accepted.

Our shipping department strives to pack shipments safely and efficiently so your merchandise will arrive complete, in new, undamaged condition. Occasionally though, damages will occur in shipping. Please observe the following guidelines to ensure your claim can be processed quickly and successfully.

- FedEx shipments must be inspected within three days of receipt for damages. Should you incur damage, save all packaging materials and contact Drake Automotive Group Customer Service.
- Common carrier (truck) shipments and all sheet metal must be inspected upon arrival to file a damage claim. Note ALL damages on the Bill of Lading.

**Accessories** • Audio • Brakes • Bumpers • Cooling System • Door Parts • Electrical & Lighting • Emblems • Engine • Exhaust • Fuel System • Hardware Heating & AC • Interior • Keys & Locks • Literature • Mirrors • Paint • Sheet Metal & Body Parts • Steering • Suspension • Transmission • Trunk • Wipers

## 1966-1977 Chrome Antenna Assembly

Replace that rusty old antenna with our complete, "ready-to-install," chrome antenna assembly. This new addition to the

Scott Drake Bronco product line-up, is an exact reproduction of the original. Antenna features a beautiful bright chrome mounting bezel and retaining nut. Antenna shaft is highly-polished, and retracts smoothly down into the attached protective metal tube. Wires are encased in a protective, water-proof rubber sleeve which attaches

directly the to firewall with the provided hardware.



C6TZ-18813-A  
66-77: Bronco, Ford truck

List	Dealer Price
\$99. <sup>95</sup> EA	1) \$64. <sup>95</sup> 10) \$59. <sup>95</sup> 25) \$53. <sup>95</sup>



## ACCESSORIES

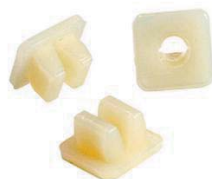
### BRONCO LICENSE PLATE BRACKET



Another great looking Bronco accessory made by Scott Drake! Our 1966-77 Bronco License Plate Frames are made with polished stainless steel for a beautiful finish. The perfect complement to our stainless steel Tail Lamp Bezels (C7TZ-99279A6/7S).

SKU	List	Dealer Price
C6TZ-13585-S	\$49. <sup>95</sup> EA	1) \$34. <sup>95</sup> 5) \$32. <sup>50</sup> 10) \$29. <sup>95</sup>

### LICENSE PLATE NUT FASTENER



Self threading white plastic. Used in front and rear valances. Perfect match.

SKU	Fits	List	Dealer Price
380707-S	66-77	\$0.45 EA	1) \$0.25 50) \$0.12 100) \$0.10

## AUDIO & ELECTRONICS

### ANTENNA BASE GROMMET



High quality compression molded neoprene rubber. Fits round base antennas.

SKU	Fits	Description	List	Dealer Price
C6TZ-18813-PAD	66-77	Bronco	\$5. <sup>95</sup> EA	1) \$3. <sup>90</sup> 5) \$3. <sup>80</sup> 10) \$3. <sup>50</sup> 25) \$2. <sup>95</sup>

### BRONCO ANTENNA MOUNTING KIT



Made from pressure die-cast zinc. Base and nut have flawless chrome. Kit includes rubber base pad.

SKU	Fits	List	Dealer Price
C6TZ-18813-K	66-77	\$29. <sup>95</sup> KI	1) \$19. <sup>50</sup> 5) \$18. <sup>75</sup> 10) \$17. <sup>95</sup> 25) \$15. <sup>60</sup>



## BRAKES

### BRAKE PRESSURE SWITCH



This switch mounts on the brake junction block to warn the driver of potential brake failure through a warning light on the dash.

SKU	Fits	List	Dealer Price
C8AZ-2B264-A	68-69	\$21. <sup>95</sup> EA	1) \$17. <sup>50</sup>

### PARKING BRAKE EQUALIZER ROD



Zinc plated concours reproduction.

SKU	Fits	List	Dealer Price
B7A-2628-B	66-76	\$11. <sup>95</sup> EA	1) \$7. <sup>50</sup> 5) \$6. <sup>95</sup>

### MASTER CYLINDER PUSHROD BUSHING



Now available. Made of white nylon for long life.

SKU	Fits	List	Dealer Price
CSDZ-2474-A	66-77	\$2. <sup>25</sup> EA	1) \$1. <sup>60</sup> 5) \$1. <sup>50</sup> 10) \$1. <sup>40</sup> 25) \$1. <sup>00</sup>

### PARKING BRAKE LEVER SPRING



Exact O.E.M. replacement, not an over the counter universal spring. Painted black.

SKU	Fits	List	Dealer Price
CSZZ-2A651-A	66-77	\$6. <sup>95</sup> EA	1) \$4. <sup>50</sup> 10) \$3. <sup>95</sup> 25) \$3. <sup>25</sup>

### BRAKE AND CLUTCH PEDAL BUSHING



Made from high strength, wear resistant plastic. Four required for automatic cars, six for manual transmission cars.

SKU	Fits	List	Dealer Price
B7AZ-2471-A	66-77	\$0.95 EA	1) \$0.60 25) \$0.45 50) \$0.40 100) \$0.35 500) \$0.30 1000) \$0.25

## BUMPERS

### CHROME BUMPER



Chrome finish gives the car a nice look. An affordable alternative to expensive re-chroming. Bumper bolts not included.

SKU	Fits	Description	List	Dealer Price
C6TZ-17757-G	66-77	Bronco front or rear, chrome	\$139. <sup>95</sup> EA	1) \$84. <sup>95</sup>

### PAINTED BUMPER



SKU	Fits	Description	List	Dealer Price
C6TZ-17757-B	66-77	Bronco front or rear, black	\$74. <sup>95</sup> EA	1) \$49. <sup>95</sup>

### BUMPER BOLT KIT



These time saving kits contain everything you need to install the front and rear bumpers.

SKU	Fits	Description	List	Dealer Price
CSZZ-17758-DLXK	66-77	Dlx. 28 piece kit	\$14. <sup>00</sup> KI	1) \$7. <sup>95</sup> 5) \$7. <sup>25</sup> 10) \$6. <sup>75</sup> 50) \$6. <sup>50</sup>

## COOLING SYSTEM

### CONCOURS RADIATOR CAPS



These concours quality caps are made in America and bear all the original markings. O.E.M. details include original letter style, SMCO. Pound rating is stamped on cap.

SKU	Fits	Description	List	Dealer Price
C5ZZ-8100-A	66-77	SMCO CON Radiator Cap (Zinc Plated)	\$14. <sup>95</sup> EA	1) \$9. <sup>95</sup> 5) \$8. <sup>95</sup> 10) \$7. <sup>95</sup>
C5ZZ-8100-AC	66-77	SMCO CON Radiator Cap (Chrome Plated)	\$14. <sup>95</sup> EA	1) \$9. <sup>95</sup> 5) \$8. <sup>95</sup> 10) \$7. <sup>95</sup>
C7ZZ-8100-A	66-77	Autolite Radiator Cap (Zinc Plated)	\$18. <sup>95</sup> EA	1) \$14. <sup>95</sup> 5) \$13. <sup>95</sup> 10) \$12. <sup>95</sup>
C7ZZ-8100-AC	66-77	Autolite Radiator Cap (Chrome Plated)	\$18. <sup>95</sup> EA	1) \$14. <sup>95</sup> 5) \$13. <sup>95</sup> 10) \$12. <sup>95</sup>

### OVER FLOW BOTTLE



New from Scott Drake. We have reproduced the original style radiator over flow bottle to exacting detail. We went one step further and made the retaining strap out of polished stainless steel to really catch the eye. Mounting hardware is also included

SKU	Fits	Description	List	Dealer Price
C6TZ-8A080-A	66-77	Bronco, High quality reproduction.	\$39. <sup>95</sup> EA	1) \$26. <sup>95</sup> 10) \$24. <sup>95</sup> 25) \$21. <sup>95</sup>

### RADIATOR INSULATOR



Made from E.P.D.M. rubber, molded just like the original.

SKU	Fits	Description	List	Dealer Price
C6TZ-8125-3K	66-77	Bronco, 3 row	\$11. <sup>95</sup> SE	1) \$7. <sup>95</sup> 5) \$7. <sup>50</sup> 10) \$6. <sup>95</sup> 25) \$5. <sup>95</sup>

### BRONCO RADIATOR MOUNTING BRACKET KIT



Kit includes both upper and lower brackets, made from high quality steel, and complete with molded E.P.D.M. rubber mounting pads. Available in black or highly-polished stainless steel.

SKU	Fits	Description	List	Dealer Price
C6TZ-8A193-K	66-77	3 row, black	\$29. <sup>95</sup> SE	1) \$20. <sup>95</sup> 5) \$19. <sup>95</sup> 10) \$18. <sup>95</sup> 25) \$16. <sup>95</sup>
C6TZ-8A193-3SK	66-77	3 row, stainless	\$39. <sup>95</sup> SE	1) \$26. <sup>95</sup> 5) \$25. <sup>95</sup> 10) \$24. <sup>95</sup> 25) \$22. <sup>95</sup>
C6TZ-8A193-4SK	66-77	4 row, stainless	\$39. <sup>95</sup> SE	1) \$26. <sup>95</sup> 5) \$25. <sup>95</sup> 10) \$24. <sup>95</sup> 25) \$22. <sup>95</sup>

### WATER BYPASS HOSE

By-pass hose with original Ford/Motorcraft markings.



C7OZ-8597-A  
67-71: Autolite logo

List	Dealer Price
\$5. <sup>95</sup> EA	1) \$3. <sup>95</sup> 10) \$3. <sup>50</sup>



### WATER TEMPERATURE SENDING UNIT

Brass sensor that screws into intake manifold and activates temperature gauge in dash.



C3AZ-10884-A  
66: All engines before 9/1/65

List	Dealer Price
\$6. <sup>95</sup> EA	1) \$4. <sup>25</sup> 5) \$3. <sup>95</sup>



C6DZ-10884-B  
66-69: 200, 289, 302 & 390 after 9/1/65

List	Dealer Price
\$6. <sup>95</sup> EA	1) \$4. <sup>25</sup> 5) \$3. <sup>95</sup>

## DOORS PARTS

### BRONCO DOOR PANELS



Quality Bronco door panels in black or parchment, with mylar or woodgrain accents.

SKU	Fits	Description	List	Dealer \$
C8TZ-65239423BM	68-73	Mylar/black	\$129. <sup>95</sup> EA	1) \$102. <sup>95</sup>
C8TZ-65239423BW	68-73	Woodgrain/black	\$129. <sup>95</sup> EA	1) \$102. <sup>95</sup>
C8TZ-65239423PM	68-73	Mylar/parchment	\$129. <sup>95</sup> EA	1) \$102. <sup>95</sup>
C8TZ-65239423PW	68-73	Woodgrain/parchment	\$129. <sup>95</sup> EA	1) \$102. <sup>95</sup>

### DOOR PANEL CLIP



High quality door panel clips in bulk or nicely packaged in a set of 30.

SKU	Fits	Description	List	Dealer Price
380552-5	66-77	Std., bulk	\$0.35 EA	1) \$0.22 100) \$0.15 250) \$0.12 1000) \$0.09

### BRONCO ARM REST PAD



Made to exact standards to look and feel just like the original.

SKU	Fits	Description	List	Dealer Price
C8TZ-6524100-BK	68-77	Black, RH	\$29. <sup>95</sup> EA	1)\$19. <sup>95</sup> 5)\$18. <sup>95</sup> 10)\$17. <sup>95</sup>
C8TZ-6524101-BK	68-77	Black, LH	\$29. <sup>95</sup> EA	1)\$19. <sup>95</sup> 5)\$18. <sup>95</sup> 10)\$17. <sup>95</sup>
C8TZ-6524100-PR	68-77	Parchment, RH	\$29. <sup>95</sup> EA	1)\$19. <sup>95</sup> 5)\$18. <sup>95</sup> 10)\$17. <sup>95</sup>
C8TZ-6524101-PR	68-77	Parchment, LH	\$29. <sup>95</sup> EA	1)\$19. <sup>95</sup> 5)\$18. <sup>95</sup> 10)\$17. <sup>95</sup>

### DOOR PANEL CUP



These plastic injected-molded door cups are an exact copy, with the correct-textured surface. Available in black or white.

SKU	Fits	Desc.	List	Dealer Price
C8AZ-6222634-B	68-77	Black	\$21. <sup>95</sup> PR	1)\$14. <sup>25</sup> 5)\$13. <sup>95</sup> 10)\$13. <sup>25</sup> 25)\$11. <sup>50</sup>
C8AZ-6222634-W	68-77	White	\$21. <sup>95</sup> PR	1)\$14. <sup>25</sup> 5)\$13. <sup>95</sup> 10)\$13. <sup>25</sup> 25)\$11. <sup>50</sup>

### INSIDE DOOR HANDLE

Excellent reproductions of the originals, fit is perfect. All of these handles feature a brightly polished, chrome finish. **Mixing Allowed**



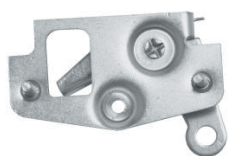
C8AZ-6222600-B  
68-77: Bronco, RH

List	Dealer Price
\$24. <sup>95</sup> EA	1)\$16. <sup>25</sup> 5)\$14. <sup>95</sup> 10)\$12. <sup>95</sup>

C8AZ-6222601-B  
68-77: Bronco, LH

List	Dealer Price
\$24. <sup>95</sup> EA	1)\$16. <sup>25</sup> 5)\$14. <sup>95</sup> 10)\$12. <sup>95</sup>

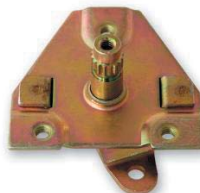
### DOOR INNER CONTROL



Now available from Scott Drake, Inner Door Handle Controls! These door controls feature a strong spring and zinc plating for years of service. Available for the right or left hand side. Requires 1 lock rod clip, part #C5AZ-6221952-AR.

SKU	Fits	Description	List	Dealer Price
C8TZ-6221818-A	68-77	Bronco, RH	\$19. <sup>95</sup> EA	1)\$12. <sup>95</sup> 5)\$12. <sup>50</sup> 10)\$11. <sup>95</sup>
C8TZ-6221819-A	68-77	Bronco, LH	\$19. <sup>95</sup> EA	1)\$12. <sup>95</sup> 5)\$12. <sup>50</sup> 10)\$11. <sup>95</sup>

### DOOR SHAFT ASSEMBLY



A perfect reproduction. Stamped steel, precision-machined stem. All gold zinc plated. Available in both right and left hand. Order part #C3AZ-6221952-BR for door latch rod retainer.

SKU	Fits	Description	List	Dealer Price
C5Z-6521818-C	67	Std., RH	\$14. <sup>95</sup> EA	1)\$8. <sup>95</sup> 5)\$8. <sup>50</sup> 10)\$8. <sup>00</sup> 25)\$7. <sup>25</sup>
C5Z-6521819-C	67	Std., LH	\$14. <sup>95</sup> EA	1)\$8. <sup>95</sup> 5)\$8. <sup>50</sup> 10)\$8. <sup>00</sup> 25)\$7. <sup>25</sup>

### DOOR WINDOW CRANK

Highly detailed die-cast zinc construction. Finished in beautiful chrome. Our handles feature much better detail than the competition.



C8AZ-6223342-A  
68-77: Chrome

List	Dealer Price
\$12. <sup>00</sup> EA	1)\$7. <sup>00</sup> 5)\$6. <sup>25</sup> 10)\$6. <sup>50</sup> 25)\$6. <sup>25</sup> 50)\$5. <sup>25</sup> 100)\$5. <sup>50</sup>

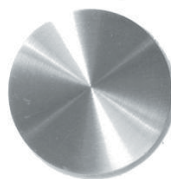
### WHITE, INSIDE WINDOW CRANK & DOOR HANDLE BACKING PLATE



Protects door panels from the abrasive action of rotating handles. Made from a very hard nylon type material. Ours feature the correct milky white color.

SKU	Fits	Description	List	Dealer Price
C8AZ-6223370-A	68-77	Door	\$0.90 EA	1)\$0.55 25)\$0.50 50)\$0.45 100)\$0.40

### WINDOW CRANK HANDLE COVER PLATE



This is a aluminum disc that covers the window crank handle screw hole. Stamped aluminum with circular brushed finish and adhesive backed.

SKU	Fits	List	Dealer Price
C8AZ-6223362-A	68-73	\$1. <sup>25</sup> EA	1)\$0.75 25)\$0.70 50)\$0.65 100)\$0.60 500)\$0.50

## WINDOW CRANK KNOB

A premium reproduction. The knob is vinyl-molded and has a plastic insert just like the original. Mounting pin and wave washer are also included.



C8AZ-6223352-BK  
68-77: Black

List	Dealer Price
\$6. <sup>95</sup> EA	1) \$3. <sup>95</sup> 10) \$3. <sup>25</sup> 25) \$2. <sup>95</sup> 100) \$2. <sup>50</sup>



C8AZ-6223352-BL  
68-77: Blue

List	Dealer Price
\$7. <sup>95</sup> EA	1) \$5. <sup>50</sup> 10) \$5. <sup>25</sup> 25) \$5. <sup>00</sup>



C8AZ-6223352-CL  
68-77: Clear/Silver

List	Dealer Price
\$7. <sup>95</sup> EA	1) \$5. <sup>50</sup> 10) \$5. <sup>25</sup> 25) \$5. <sup>00</sup>



C8AZ-6223352-GI  
68-77: Ginger

List	Dealer Price
\$7. <sup>95</sup> EA	1) \$5. <sup>50</sup> 10) \$5. <sup>25</sup> 25) \$5. <sup>00</sup>



C8AZ-6223352-GR  
68-77: Green

List	Dealer Price
\$7. <sup>95</sup> EA	1) \$5. <sup>50</sup> 10) \$5. <sup>25</sup> 25) \$5. <sup>00</sup>



C8AZ-6223352-IG  
68-77: Ivy gold

List	Dealer Price
\$7. <sup>95</sup> EA	1) \$5. <sup>50</sup> 10) \$5. <sup>25</sup> 25) \$5. <sup>00</sup>



C8AZ-6223352-MR  
68-77: Maroon

List	Dealer Price
\$7. <sup>95</sup> EA	1) \$5. <sup>50</sup> 10) \$5. <sup>25</sup> 25) \$5. <sup>00</sup>

## WINDOW CRANK KNOB (CONTINUED)



C8AZ-6223352-PR  
68-77: Parchment & nugget gold

List	Dealer Price
\$7. <sup>95</sup> EA	1) \$5. <sup>50</sup> 10) \$5. <sup>25</sup> 25) \$5. <sup>00</sup>



C8AZ-6223352-VE  
68-77: Vermillion

List	Dealer Price
\$7. <sup>95</sup> EA	1) \$5. <sup>50</sup> 10) \$5. <sup>25</sup> 25) \$5. <sup>00</sup>



C8AZ-6223352-WT  
68-77: White

List	Dealer Price
\$7. <sup>95</sup> EA	1) \$5. <sup>50</sup> 10) \$5. <sup>25</sup> 25) \$5. <sup>00</sup>

## DOOR LOCK KNOB

Made by Plastic injection. Very good detail with a smooth chrome finish..



C5DZ-6221850-A  
66-67: Chrome

List	Dealer Price
\$5. <sup>00</sup> PR	1) \$3. <sup>00</sup> 5) \$2. <sup>40</sup> 10) \$2. <sup>20</sup> 50) \$1. <sup>80</sup> 100) \$1. <sup>60</sup>



C8AZ-6221850-A  
68-77: Chrome

List	Dealer Price
\$5. <sup>00</sup> PR	1) \$3. <sup>00</sup> 5) \$2. <sup>40</sup> 10) \$2. <sup>20</sup>

## VENT WINDOW HANDLE

Our vent handles are cast from our own tooling with a great chrome finish. Our nylon tips will not scratch the vent frame. Sold as a matched pair. Fits several Ford models. Roll pins included.



C6OZ-6522916/7A  
66-67

List	Dealer Price
\$29. <sup>95</sup> PR	1) \$19. <sup>95</sup> 5) \$17. <sup>50</sup> 10) \$14. <sup>95</sup>



C8OZ-5422916/7B  
68-77

List	Dealer Price
\$29. <sup>95</sup> PR	1) \$19. <sup>95</sup> 5) \$17. <sup>50</sup> 10) \$14. <sup>95</sup>



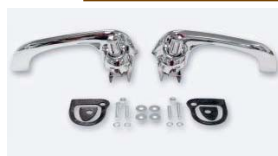
## 1966-1977 Show Quality Exterior Door Handles

Putting the finishing touches on that restoration project? There's no better choice than these exact reproduction exterior door handles. Made from pressure die-cast zinc, and then finished in high-quality, triple chrome plating. The chrome on these handles is perfect and un-pitted, and after going through CASS verification and rigorous salt spray testing, the finish is guaranteed for 2 years. Handles come in pairs and include buttons, aligning studs, button-stop o-rings, springs, gaskets, and all mounting hardware. Can it get any better than this?



SKU	Fits	Description	List	Dealer Price
C4DZ-6222404/5P	66-77	Show-quality, chrome	\$64. <sup>95</sup> KI	1) \$44. <sup>95</sup> 5) \$39. <sup>95</sup> 10) \$34. <sup>95</sup>
C4DZ-6222404/5S	66-77	Show-quality, satin	\$64. <sup>95</sup> KI	1) \$41. <sup>95</sup> 5) \$40. <sup>95</sup> 10) \$39. <sup>95</sup> 25) \$36. <sup>95</sup>

### ECONOMY OUTSIDE DOOR HANDLE



Good quality and economically priced for the value-minded shopper. Kit includes both left and right handles, buttons, pads, hardware and brackets.

SKU	Fits	Description	List	Dealer Price
C4DZ-6222404/5A	66-77	Economy	\$25. <sup>95</sup> KI	1) \$16. <sup>95</sup> 5) \$15. <sup>95</sup> 10) \$15. <sup>50</sup>

### OUTSIDE DOOR HANDLE PAD



Fit between door handle and door body panel. Injection-molded plastic just like the original. Sold in complete sets only. 4 piece sets.

SKU	Fits	List	Dealer Price
CODZ-6422428/9K	66-77	\$4. <sup>00</sup> SE	1) \$2. <sup>60</sup> 5) \$2. <sup>50</sup> 10) \$2. <sup>40</sup> 25) \$2. <sup>25</sup> 50) \$2. <sup>15</sup> 100) \$2. <sup>00</sup>

### DOOR HINGE



Made by Scott Drake, 1966-77 Bronco Door Hinges. These standard replacement hinges feature oversized pins and bronze bushings for long wear.

SKU	Fits	Description	List	Dealer Price
C6TZ-9722800-A	66-77	RH	\$49. <sup>95</sup> EA	1) \$32. <sup>50</sup> 8) \$29. <sup>95</sup>
C6TZ-9722801-A	66-77	LH	\$49. <sup>95</sup> EA	1) \$32. <sup>50</sup> 8) \$29. <sup>95</sup>

### BRONCO REMOVABLE DOOR HINGE KIT



Kit includes: 4 removable style door hinges, 2 quick-release door check brackets, 2 nylon web door straps with stainless anchors, and all the hardware needed to convert your Bronco.

SKU	Fits	Description	List	Dealer Price
C6TZ-9722800-SK	66-77	Stainless	\$295. <sup>00</sup> KI	1) \$194. <sup>95</sup> 5) \$189. <sup>95</sup> 10) \$179. <sup>95</sup>

### BRONCO DOOR STRAP KIT



Made with heavy-duty fabric webbing just like the original straps. Additional improvements include solid stainless steel end brackets, and stainless steel pan-head Phillips screws. One set does both doors.

SKU	Fits	List	Dealer Price
C6TZ-9623574-BK	66-77	\$19. <sup>95</sup> KI	1) \$12. <sup>95</sup> 5) \$12. <sup>50</sup> 10) \$11. <sup>95</sup> 25) \$10. <sup>40</sup>

### BRONCO DOOR STRAP MOUNT BRACKETS



Polished stainless steel door strap brackets with stainless mounting screws. For removable doors only, allows user to change or remove doors.

SKU	Fits	List	Dealer Price
C6TZ-9623574-DR	66-77	\$34. <sup>00</sup> SE	1) \$22. <sup>95</sup>



## BRONCO TAILGATE HANDLE



Now available from Scott Drake, 66-77 Bronco Tailgate Handles! These handles are an exact reproduction of the original with a highly polished stainless steel finish!

SKU	Fits	List	Dealer Price
C7TZ-99431B82-S	66-77	\$24. <sup>95</sup> EA	1)\$16. <sup>25</sup> 5)\$14. <sup>95</sup> 10)\$12. <sup>95</sup>

## DOOR WINDOW REGULATOR



Scott Drake's reputation for making high quality and durable window regulators for the classic Mustang follows with our new Bronco

window regulators. We designed our regulator to use both early and late window cranks. Constructed of heavy gauge steel and painted satin black for long life. The roller bushing is also included. They are ready to roll. **Mixing allowed.**

SKU	Fits	Description	List	Dealer Price
C8TZ-9723200-A	66-77	Bronco, RH	\$79. <sup>95</sup> EA	1)\$54. <sup>95</sup> 10)\$50. <sup>95</sup>
C8TZ-9723201-A	66-77	Bronco, LH	\$79. <sup>95</sup> EA	1)\$54. <sup>95</sup> 10)\$50. <sup>95</sup>

## WINDOW ROLLER & CLIP



Used on door and quarter window regulators scissors. Replacement makes window glass move easier.

SKU	Fits	List	Dealer Price
COAB-6423240-B	66-77	\$1. <sup>00</sup> EA	1)\$0.50 25)\$0.40 50)\$0.36 100)\$0.32 250)\$0.28 1000)\$0.25

## DOOR LATCH ROD RETAINER



C3AZ-6221952-A  
66-67: White economy replacement

List	Dealer Price
\$1. <sup>95</sup> EA	1)\$1. <sup>20</sup> 10)\$0.95 25)\$0.75



C3AZ-6221952-BR  
66-67: Concours

List	Dealer Price
\$4. <sup>95</sup> EA	1)\$3. <sup>75</sup> 10)\$3. <sup>25</sup> 25)\$2. <sup>95</sup> 100)\$2. <sup>50</sup>



C5AZ-6221952-AR  
68-77: Concours

List	Dealer Price
\$4. <sup>95</sup> EA	1)\$3. <sup>75</sup> 10)\$3. <sup>25</sup> 25)\$2. <sup>95</sup> 50)\$2. <sup>50</sup>

## DOOR LATCH



This door latch assembly is a beautiful copy of a complicated stamping. Comes fully assembled and ready to install.

SKU	Fits	Description	List	Dealer Price
C3OZ-6221812-A	66-67	RH	\$68. <sup>95</sup> EA	1)\$49. <sup>95</sup>
C3OZ-6221813-A	66-67	LH	\$68. <sup>95</sup> EA	1)\$49. <sup>95</sup>

## STRIKER ASSEMBLY

Original factory type striker. Includes attaching parts.



C2OZ-6222008-B  
66-67: Gold zinc

List	Dealer Price
\$12. <sup>95</sup> SE	1)\$8. <sup>25</sup> 5)\$7. <sup>75</sup> 10)\$7. <sup>50</sup> 25)\$7. <sup>25</sup> 50)\$6. <sup>00</sup>



C5AZ-6222008-A  
68-77: Silver zinc, date coded 8-66

List	Dealer Price
\$14. <sup>95</sup> SE	1)\$9. <sup>25</sup> 5)\$8. <sup>75</sup> 10)\$8. <sup>50</sup> 25)\$8. <sup>25</sup>

C5AZ-6222008-B  
68-77: Silver zinc, date coded 11-67

List	Dealer Price
\$14. <sup>95</sup> SE	1)\$9. <sup>25</sup> 5)\$8. <sup>75</sup> 10)\$8. <sup>50</sup> 25)\$8. <sup>25</sup>

## ELECTRICAL & LIGHTING

### BRONCO TAIL LIGHT BEZEL



Scott Drake has done it again with these 66-77 Bronco Stainless Steel Tail Light Bezels! These beautiful tail light bezels are sure to stop everyone in their tracks. The highly polished finish really dresses up the back of the Bronco, but is also made durable enough to withstand almost anything you can throw at it. The perfect compliment to our stainless steel license plate frame.

SKU	Fits	List	Dealer Price
C7TZ-99279A6/7S	67-77	\$59. <sup>95</sup> PR	1)\$38. <sup>95</sup> 5)\$35. <sup>95</sup>

### SIDE MARKER BEZEL

The bezel that surrounds the marker lens. Polished stainless steel.



DOUZ-15A460-S  
70-77: Bronco, RH or LH

List	Dealer Price
\$49 <sup>95</sup> PR	1) \$32 <sup>50</sup> 10) \$29 <sup>95</sup> 25) \$25 <sup>95</sup>

### PARK LIGHT SEAL



Grey, molded sponge like the originals. These protect the paint from chipping.

SKU	Fits	Description	List	Dealer Price
C9TZ-13217-A	70-77	Bronco	\$19 <sup>95</sup> PR	1) \$12 <sup>95</sup> 5) \$12 <sup>50</sup> 10) \$11 <sup>95</sup>

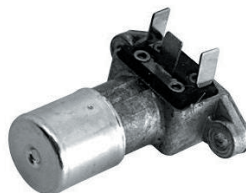
## ELECTRO LUMINESCENT INSTRUMENT PANEL SET



A Scott Drake exclusive product, these Bronco instrument panels are made with a space-age electroluminescent substance that actually glows. Designed to easily mount over your original Ford gauges. Gauge faces light up making instruments safer and much easier to see. Light intensity can be adjusted with the included control knob and the color can be changed from a soft blue to soft green with a punch of a button. Includes panels, wiring harness, controller, and instructions. Adhesive mounted.

SKU	Fits	Description	List	Dealer Price
C6TZ-10890-GLO	66-77	Bronco	\$99 <sup>95</sup> SE	1) \$64 <sup>95</sup> 5) \$59 <sup>95</sup>

### HEADLIGHT DIMMER SWITCH



This quality after-market dimmer switch matches the original nicely. Imported. Note: Electrical parts are not returnable

SKU	Fits	Description	List	Dealer Price
C0TZ-13A024-A	66-77	Imported	\$7 <sup>50</sup> EA	1) \$3 <sup>95</sup> 5) \$3 <sup>50</sup>

### HEADLIGHT SWITCH



This quality after-market headlamp switch matches the original nicely. Imported.

SKU	Fits	List	Dealer Price
D3ZZ-11654-A	66-77	\$19 <sup>95</sup> EA	1) \$12 <sup>50</sup>

### HEADLIGHT RETAINING RING



Headlight ring features, high-quality, stamped stainless-steel construction.

SKU	Fits	Description	List	Dealer Price
D3TZ-13015-A	66-77	Stainless steel	\$8 <sup>95</sup> EA	1) \$5 <sup>50</sup> 5) \$4 <sup>95</sup>

### IGNITION SWITCH



Made for us by the vendor that owns the original tooling, for a truly accurate piece. Switches do not include bezels.

SKU	Fits	List	Dealer Price
C3UZ-11572-A	66-77	\$14 <sup>95</sup> EA	1) \$8 <sup>95</sup> 5) \$8 <sup>25</sup> 10) \$7 <sup>25</sup>

### STOP LIGHT SWITCH



High quality replacement part. Non-original appearance

SKU	Fits	Description	List	Dealer Price
C4DZ-13480-A	66	Early, 2 prong	\$12 <sup>95</sup> EA	1) \$8 <sup>50</sup>

**HEADLIGHT "ON" WARNING BUZZER**

The Scott Drake headlight "ON" warning buzzer is designed to activate when either the parking lights or head lights are left on after the ignition is turned off. This is a easy to install kit using quick splice connectors. No permanent alterations to your vehicle's wiring is required. Includes instruc-

tions for 1965-67 Mustangs, however our warning buzzer kit can also be adapted to fit other makes and models of cars.



SKU	Fits	List	Dealer Price
C6AZ-14931-AR <b>NEW!</b>	66-77	\$24. <sup>95</sup> SE	1) \$16. <sup>25</sup> 5) \$15. <sup>50</sup> 10) \$14. <sup>95</sup>

**INSTRUMENT VOLTAGE REGULATOR**

Excellent replacement part, designed to keep the gauges accurate.

SKU	Fits	List	Dealer Price
B9MZ-10804-C	66-77	\$35. <sup>95</sup> EA	1) \$19. <sup>95</sup>

**TURN SIGNAL CANCEL CAM**

Great reproduction of an often broken part.



C3DZ-13318-B  
66-77

List	Dealer Price
\$10. <sup>95</sup> EA	1) \$7. <sup>15</sup> 5) \$6. <sup>75</sup> 10) \$6. <sup>50</sup>

**TURN SIGNAL SWITCH**

These switches are made by the OE supplier to Ford. Not a cheap reproduction. USA made.

SKU	Fits	Description	List	Dealer Price
C50Z-13341-B	66-70	Also fits 71-73 but wire colors are different	\$51. <sup>95</sup> EA	1) \$36. <sup>95</sup> 5) \$35. <sup>95</sup> 10) \$34. <sup>95</sup>
D3TZ-13341-A	74-77	W/ manual	\$79. <sup>95</sup> EA	1) \$51. <sup>95</sup>
D5TZ-13341-B	74-77	W/ auto.	\$69. <sup>95</sup> EA	1) \$45. <sup>95</sup>

**BATTERY HOLD DOWN CLAMP**

Heavy duty stamped steel construction with black vinyl coating like the original to prevent corrosion.



C5AZ-10718-A  
66-69

List	Dealer Price
\$6. <sup>95</sup> EA	1) \$4. <sup>50</sup> 5) \$4. <sup>25</sup> 10) \$3. <sup>95</sup>



D0DZ-10718-A  
70-77

List	Dealer Price
\$14. <sup>95</sup> EA	1) \$9. <sup>95</sup>

**BATTERY CLAMP BOLT**

Bolt to secure the battery in the tray.

SKU	Fits	List	Dealer Price
D0AZ-10756-A	66-77	\$1. <sup>95</sup> EA	1) \$1. <sup>10</sup> 10) \$1. <sup>00</sup> 25) \$0.90 100) \$0.75

**BATTERY HOLD DOWN CLAMP KIT**

Includes battery clamp and bolt (or bolts) required to mount battery on tray.



C5AZ-10718-KIT  
66-69

List	Dealer Price
\$11. <sup>95</sup> KI	1) \$7. <sup>20</sup> 5) \$6. <sup>25</sup> 10) \$5. <sup>95</sup>

**BATTERY HOLD DOWN BOLT KIT**

Kit comes complete with J bolts and mounting nuts.

SKU	Fits	List	Dealer Price
D0AZ-10756-K	66-77	\$4. <sup>95</sup> KI	1) \$2. <sup>95</sup> 10) \$2. <sup>75</sup> 25) \$2. <sup>50</sup>

**BATTERY TRAY**

Exactly like the originals. These battery trays are a popular item for restorers since most of the originals have been destroyed by leaking batteries over the years.



C4TZ-10732-D  
66-77: Bronco

List	Dealer Price
\$14. <sup>95</sup> EA	1) \$10. <sup>95</sup>

**NEW  
LOWER  
PRICE**

## EFI WIRING HARNESS KIT



At Scott Drake we are certain you will find our New EFI (Electronic Fuel Injection) Wiring Harness Kits to be the easiest and most user friendly EFI Kits on the market! Our EFI Wiring Harnesses are virtually Plug & Play! They come com-

pletely wrapped and ready to install. The wires are top-quality fire resistant, printed with the name of the sensor or terminal they connect to. Our Harnesses are equipped with the correct Ford connections and correct length wires, and each kit comes complete with easy to understand instructions. Our new Harnesses are available for 1965-70 Mustangs and for 1966-77 Broncos, and are purposely built to fit 302 and 351 Fuel injected HO motors within the engine compartments of the Mustang or Bronco. Note: These Kits are designed to work with 88-93 mass air 5.0 motors but will work on 94-95 5.0 and all mass air flow 5.8 motors using 88-93 Mustang or GT40 style intake and throttle body.

SKU	Fits	Description	List	Dealer Price
C6TZ-14289-EFI	66-77	Bronco	\$749. <sup>95</sup> EA	1) \$574. <sup>95</sup>

## EMBLEMS

### FENDER EMBLEM

Made by Scott Drake. We feel these are the best reproductions on the market. All our emblems feature flawless chrome and eye catching detail. Many of these have applications that go beyond just Broncos. Mounting hardware included.



D9ZZ-16228-A  
66-77: 5.0 (Adhesive backed)

List	Dealer Price
\$10. <sup>50</sup> EA	1) \$6. <sup>95</sup> 10) \$5. <sup>95</sup> 25) \$4. <sup>95</sup>



C3OZ-16228-B  
66-68: 289

List	Dealer Price
\$8. <sup>95</sup> EA	1) \$5. <sup>50</sup> 5) \$5. <sup>00</sup> 10) \$4. <sup>50</sup> 25) \$3. <sup>95</sup> 50) \$3. <sup>50</sup> 100) \$3. <sup>25</sup>



C3OZ-16228-302  
66-77: 302 (Not an authentic copy of an original Ford emblem)

List	Dealer Price
\$13. <sup>95</sup> EA	1) \$8. <sup>95</sup> 5) \$8. <sup>50</sup> 10) \$7. <sup>95</sup> 50) \$7. <sup>20</sup>



C3OZ-16228-5.0  
66-77: 5.0 (Not an authentic copy of an original Ford emblem)

List	Dealer Price
\$14. <sup>95</sup> EA	1) \$9. <sup>75</sup> 5) \$8. <sup>95</sup> 10) \$8. <sup>50</sup> 50) \$7. <sup>80</sup>



C5ZZ-16228-B  
66-77: High performance (fits any Scott Drake "V-Badge")

List	Dealer Price
\$9. <sup>95</sup> EA	1) \$6. <sup>00</sup> 5) \$6. <sup>10</sup> 10) \$5. <sup>95</sup> 25) \$5. <sup>50</sup> 50) \$5. <sup>00</sup> 100) \$4. <sup>50</sup>

### FENDER EMBLEM (CONTINUED)



C5ZZ-16228-HO  
66-77: High output (fits any Scott Drake "V-Badge")

List	Dealer Price
\$14. <sup>95</sup> EA	1) \$9. <sup>75</sup> 5) \$8. <sup>95</sup> 10) \$8. <sup>50</sup>



C6TZ-16098-B  
66-77: Bronco

List	Dealer Price
\$29. <sup>95</sup> EA	1) \$19. <sup>50</sup> 5) \$19. <sup>00</sup> 10) \$18. <sup>00</sup>



C7TZ-16098-A  
66-77: Bronco Sport

List	Dealer Price
\$49. <sup>95</sup> EA	1) \$32. <sup>50</sup> 5) \$29. <sup>95</sup> 10) \$27. <sup>50</sup>



C8OZ-16228-B  
68-71: Bronco 302, RH or LH

List	Dealer Price
\$27. <sup>50</sup> EA	1) \$17. <sup>95</sup> 5) \$16. <sup>95</sup> 10) \$15. <sup>95</sup>



### GRILLE EMBLEM

A spectacular piece of automotive jewelry. Constructed of die-cast zinc, with concours chrome plating. Inserts are finished with ruby-red reflective paint. Includes mounting hardware.



C7TZ-8316-S  
67-77: Bronco

List	Dealer Price
\$74. <sup>95</sup> SE	1) \$48. <sup>95</sup> 5) \$44. <sup>95</sup>



### SILL PLATE EMBLEM

This is the aluminum emblem which mounts on the center of all scuff plates. Features raised script like original, adhesive backed and protective coating.



C5ZZ-6513208-T  
66-77: Black, Ford logo

List	Dealer Price
\$2. <sup>50</sup> EA	1) \$1. <sup>40</sup> 10) \$1. <sup>25</sup> 25) \$1. <sup>10</sup> 100) \$0.95



C7ZZ-6513208-T  
66-77: Blue, Ford logo

List	Dealer Price
\$1. <sup>95</sup> EA	1) \$1. <sup>25</sup> 10) \$0.95 25) \$0.85 100) \$0.75





## ENGINE

### AFTERMARKET VALVE COVERS



C4DZ-6A582-C  
66-70: Economy chrome, fits 6-cyl 170-200-250

List	Dealer Price
\$30. <sup>00</sup> EA	1) \$20. <sup>95</sup> 3) \$19. <sup>50</sup> 6) \$17. <sup>95</sup>



C5ZZ-6A582-C  
66-77: Economy chrome, fits 260-289-302-352

List	Dealer Price
\$33. <sup>95</sup> PR	1) \$21. <sup>99</sup> 3) \$20. <sup>50</sup> 6) \$19. <sup>95</sup>

### ORIGINAL STYLE VALVE COVER



C5ZZ-6A582-C/D  
66-77: Chrome concours, fits 260-289-302-352

List	Dealer Price
\$69. <sup>95</sup> PR	1) \$49. <sup>95</sup> 5) \$44. <sup>95</sup> 10) \$42. <sup>95</sup> 25) \$39. <sup>95</sup>



C5ZZ-6A582-BL  
66-77: Ford blue, fits 260-289-302-352



List	Dealer Price
\$49. <sup>95</sup> PR	1) \$32. <sup>50</sup> 5) \$29. <sup>95</sup>



C8OZ-6A582-C  
68-77: Chrome, fits 260-289-302-352

List	Dealer Price
\$99. <sup>95</sup> PR	1) \$64. <sup>95</sup> 5) \$59. <sup>95</sup>



C8OZ-6A582-BL  
68-77: Ford blue, fits 260-289-302-352

List	Dealer Price
\$59. <sup>95</sup> PR	1) \$38. <sup>95</sup>



### AFTERMARKET OIL CAP

These fit aftermarket valve covers (left) only.



W84881B  
66-77: Chrome Push On, no tube

List	Dealer Price
\$5. <sup>95</sup> EA	1) \$3. <sup>95</sup>



W89252B  
66-77: Chrome Push On, with tube

List	Dealer Price
\$5. <sup>95</sup> EA	1) \$3. <sup>95</sup>

### OIL CAP

These factory caps offer you very similar features as the old originals.



B6AZ-6766-B  
66-77: FoMoCo logo, closed, push-on

List	Dealer Price
\$15. <sup>95</sup> EA	1) \$10. <sup>95</sup> 5) \$9. <sup>95</sup> 10) \$8. <sup>95</sup> 50) \$6. <sup>95</sup>



C5ZZ-6766-D  
66-77: FoMoCo logo, chrome, with tube, push-on

List	Dealer Price
\$19. <sup>95</sup> EA	1) \$13. <sup>95</sup> 5) \$12. <sup>95</sup> 10) \$11. <sup>95</sup>



C5ZZ-6766-B  
66-77: FoMoCo logo, black, with tube, push-on

List	Dealer Price
\$15. <sup>95</sup> EA	1) \$10. <sup>95</sup> 5) \$9. <sup>95</sup> 25) \$8. <sup>95</sup>



C5ME-6766-A  
68-77: FoMoCo logo, chrome, twist on, no emissions control

List	Dealer Price
\$34. <sup>95</sup> EA	1) \$22. <sup>95</sup> 5) \$21. <sup>95</sup> 25) \$20. <sup>95</sup>



C5ZZ-6766-FR  
66-77: Black, no tube, open, push-on

List	Dealer Price
\$12. <sup>95</sup> EA	1) \$8. <sup>95</sup> 5) \$7. <sup>95</sup> 25) \$6. <sup>95</sup>



C8AZ-6766-A  
68-77: Autolite Logo, black, closed, twist-on

List	Dealer Price
\$29. <sup>95</sup> EA	1) \$19. <sup>50</sup> 5) \$18. <sup>95</sup> 10) \$17. <sup>95</sup>



C8AZ-6766-B  
68-77: Autolite Logo, chrome, closed, twist-on

List	Dealer Price
\$39. <sup>95</sup> EA	1) \$25. <sup>95</sup> 5) \$24. <sup>95</sup> 10) \$23. <sup>95</sup>





## VALVE COVER GROMMETS

Available for original style valve covers and for aftermarket valve covers.



C8AZ-6892  
66-67: For original style, stamped-steel valve covers

List	Dealer Price
\$3. <sup>95</sup> EA	1) \$2. <sup>50</sup>



D00Z-6892  
68-77: For original style, stamped-steel valve covers

List	Dealer Price
\$3. <sup>95</sup> EA	1) \$2. <sup>50</sup> 5) \$2. <sup>35</sup> 10) \$2. <sup>00</sup>



W84889B  
66-77: Oil cap, 1 inch inside diameter, works on our chrome aftermarket valve covers

List	Dealer Price
\$1. <sup>95</sup> EA	1) \$1. <sup>20</sup> 10) \$1. <sup>00</sup>



W89771B  
66-77: Oil cap, 3/4 inch inside diameter, works on our chrome aftermarket valve covers

List	Dealer Price
\$1. <sup>95</sup> EA	1) \$1. <sup>20</sup> 10) \$1. <sup>00</sup>

## CLASSIC ALUMINUM VALVE COVERS

Made by Scott Drake, Classic Aluminum Valve Covers for small block Ford engines! These valve covers are die-cast from high-quality 383-3 aluminum alloy, and then given a durable powder-coated wrinkled finish or polished aluminum finish. They also feature a cadmium plated oil filler tube to help stop corrosion, an improved oil baffle design to accommodate high-lift cam shafts, and will work with most roller rockers. Spark plug wire brackets and PCV grommet included. Available in a variety of styles. All styles fit Small Block 260-289-302-351 Ford engines. **Will not fit EFI.**

**B6AZ-6766-B oil cap is recommended.**



6A582-B  
66-77: Bronco, black

List	Dealer Price
\$144. <sup>95</sup> PR	1) \$109. <sup>95</sup> 5) \$104. <sup>95</sup> 10) \$99. <sup>95</sup>



6A582-BP  
66-77: Bronco, Polished

List	Dealer Price
\$204. <sup>95</sup> PR	1) \$154. <sup>95</sup> 5) \$147. <sup>95</sup> 10) \$140. <sup>95</sup>



## CLASSIC ALUMINUM VALVE COVER (CONTINUED)



6A582-289  
66-77: 289, Black

List	Dealer Price
\$134. <sup>95</sup> PR	1) \$102. <sup>95</sup> 5) \$95. <sup>95</sup> 10) \$98. <sup>50</sup>



6A582-289P  
66-77: 289, Polished

List	Dealer Price
\$194. <sup>95</sup> PR	1) \$154. <sup>95</sup> 5) \$147. <sup>95</sup> 10) \$134. <sup>50</sup>



6A582-302  
66-77: 302, Black

List	Dealer Price
\$134. <sup>95</sup> PR	1) \$102. <sup>95</sup> 5) \$95. <sup>95</sup> 10) \$98. <sup>50</sup>



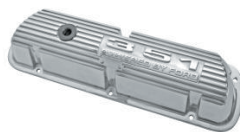
6A582-302P  
66-77: 302, Polished

List	Dealer Price
\$194. <sup>95</sup> PR	1) \$154. <sup>95</sup> 5) \$147. <sup>95</sup> 10) \$134. <sup>50</sup>



6A582-351  
66-77: 351, Black

List	Dealer Price
\$134. <sup>95</sup> PR	1) \$102. <sup>95</sup> 5) \$95. <sup>95</sup> 10) \$98. <sup>50</sup>



6A582-351P  
66-77: 351, Polished

List	Dealer Price
\$194. <sup>95</sup> PR	1) \$154. <sup>95</sup> 5) \$147. <sup>95</sup> 10) \$134. <sup>50</sup>



## "CAL CUSTOM" ALUMINUM-FINNED VALVE COVERS



These "Cal Custom" style Valve Covers look great! They offer a true "old school" look, and fit 260, 289, 302, and 351W engines. Requires one of each of the following (sold separately): PVC grommet (W89771B), oil cap grommet (W84889B), and oil cap (W84991B).

SKU	Fits	List	Dealer Price
CSZZ-6A582-AF	66-77	\$89. <sup>95</sup> PR	1) \$58. <sup>50</sup> 5) \$52. <sup>50</sup> 10) \$47. <sup>50</sup>

**OIL PRESSURE SENDER EXTENSION**

A Beautiful reproduction by Scott Drake. Hex shaped extension. Made from machined metal and chrome or zinc plated.



C2OZ-9B339-A  
66-77: 8 cyl. 289-302, zinc

List	Dealer Price
\$24 <sup>95</sup> EA	1) \$14 <sup>95</sup> 5) \$13 <sup>95</sup> 10) \$12 <sup>95</sup>



C2OZ-9B339-C  
66-77: 8 cyl. 289-302, chrome

List	Dealer Price
\$26 <sup>95</sup> EA	1) \$17 <sup>95</sup> 5) \$15 <sup>95</sup> 10) \$14 <sup>95</sup>

**OIL PRESSURE SENDING UNIT**

These senders screw into block and activate warning light when oil pressure is lost or give accurate reading to oil pressure gauge on cars equipped with gauges.



C9ZZ-9278-A  
66-72

List	Dealer Price
\$16 <sup>95</sup> EA	1) \$11 <sup>95</sup> 5) \$10 <sup>95</sup> 10) \$9 <sup>95</sup> 25) \$8 <sup>95</sup>

**ENGINE OIL DIP STICK**

Our dip sticks are exact reproductions. Don't confuse these with generic imported versions that are kind of close.

SKU	Fits	Description	List	Dealer Price
D1TZ-6750-BAC	66-77	Bronco, stain-less	\$16 <sup>95</sup> EA	1) \$10 <sup>95</sup> 5) \$10 <sup>50</sup> 10) \$9 <sup>95</sup>

**ENGINE OIL DIP STICK TUBE**

Original design available painted or chrome. Perfect fit.

SKU	Fits	Description	List	Dealer Price
D1TZ-6754-C*	66-77	Bronco, screw in style	\$24 <sup>95</sup> EA	1) \$15 <sup>95</sup> 5) \$15 <sup>50</sup> 10) \$14 <sup>95</sup>

**PCV HOSE**

Concours correct with ink stamped Ford script. **289-302**

SKU	Fits	List	Dealer Price
C6AZ-6A664-N	67-77	\$12 <sup>95</sup> EA	1) \$7 <sup>50</sup>

**AIR CLEANER**

These are complete air cleaner assemblies. Includes top, bottom and filter element. Includes 289 Hi-Po decals.



C5ZZ-9600-W  
66-77: hi-po, economy, chrome top w/ blue bottom, inc. 289 HiPo decal

List	Dealer Price
\$25 <sup>95</sup> EA	1) \$16 <sup>95</sup> 5) \$15 <sup>95</sup> 10) \$14 <sup>25</sup>



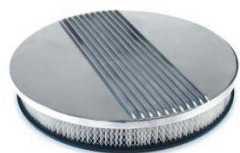
C5ZZ-9600-G  
66-77: V8 Chrome/gold, concours, chrome lid & filter, inc. 289 HiPo decal

List	Dealer Price
\$44 <sup>95</sup> SE	1) \$28 <sup>95</sup> 3) \$24 <sup>95</sup> 5) \$21 <sup>95</sup> 10) \$19 <sup>95</sup>



C5ZZ-9600  
66-77: V8 Chrome/blue, concours, chrome lid & filter, inc. 289 HiPo decal

List	Dealer Price
\$44 <sup>95</sup> SE	1) \$28 <sup>95</sup> 3) \$24 <sup>95</sup> 5) \$21 <sup>95</sup> 10) \$19 <sup>95</sup>



C5ZZ-9600-AFK  
66-77: V8 14" Aluminum Finned

List	Dealer Price
\$74 <sup>95</sup> EA	1) \$54 <sup>95</sup> 5) \$52 <sup>95</sup>

**AIR CLEANER DECALS**

High quality Air Cleaner Decal. Features exact details. Self adhesive back. If you are running a 302, you can use these in place of the 289 decal that comes with our Air Cleaners (above).



DF-321  
66-77: 302 High Performance

List	Dealer Price
\$3 <sup>95</sup> EA	1) \$2 <sup>50</sup>



DF-60  
66-77: 302-2V

List	Dealer Price
\$3 <sup>95</sup> EA	1) \$2 <sup>50</sup>

### CARB TO AIR CLEANER SCREW



This screw seems to always be missing. We made our screw just a little longer than stock to allow installing the Hi-Po air cleaner. Fit most Autolite 4V carburetors assembly. Zinc plated for years of service. **Does not fit Holley or Motorcraft carb.**

SKU	Fits	Description	List	Dealer Price
37005-S	66-77	Carb screw for air cleaner (4V)	\$6 <sup>95</sup> EA	1)\$4 <sup>95</sup> 5)\$4 <sup>25</sup> 10)\$3 <sup>95</sup>
370971-S	66-77	Carb To Air Cleaner Screw (2V)	\$6 <sup>95</sup> EA	1)\$4 <sup>95</sup> 5)\$4 <sup>25</sup> 10)\$3 <sup>95</sup>

### AIR CLEANER WING NUT



A nice reproduction.

SKU	Fits	List	Dealer Price
358871-S	66-77	\$1 <sup>25</sup> EA	1)\$0.75 25)\$0.60 50)\$0.50

### ECONOMY ENGINE DRESS UP KIT



This is an economical way to dress This engine dress-up kit can make any engine compartment look like a million dollars! Includes chrome valve covers, and oil cap. After-market style. **Fits 260-289-302 Engines**

SKU	Fits	List	Dealer Price
C5ZZ-6980	66-77	\$60 <sup>95</sup> KI	1)\$40 <sup>95</sup>

### SHOW-QUALITY ENGINE DRESS UP KIT



Round, original-style air cleaner with concours correct valve covers. Includes chrome oil cap. **Fits 260-289-302 Engines**

SKU	Fits	List	Dealer Price
C5ZZ-6980-PRO	66-77	\$114 <sup>95</sup> KI	1)\$74 <sup>95</sup> 2)\$69 <sup>95</sup>

### HIGH PERFORMANCE

#### ROLLER TIMING CHAIN SET (SMALL BLOCK)



Premium construction made by Cloyes®. Features .250 diameter seamless True® roller chain cast iron cam sprocket and heat treated billet steel crank sprocket with three patented keyways for timing. Excellent wear resistance and proven reliability for high performance applications.

SKU	Fits	List	Dealer Price
C5ZZ-6268-RK	66-77	\$51 <sup>95</sup> SE	1)\$34 <sup>50</sup>

### TIMING COVER (289, 302, 351W)



Durable cast-iron timing cover, for die-cast water pumps. Requires bolt-on timing pointer.

SKU	Fits	List	Dealer Price
C50Z-6019-B	66-73	\$99 <sup>95</sup> EA	1)\$64 <sup>95</sup> 3)\$59 <sup>95</sup> 5)\$54 <sup>95</sup>

### TIMING POINTER



Stamped steel pointer mounts to timing chain cover. Black zinc-plated. Includes mounting screw. Fits 289, 302, 351 W

SKU	Fits	List	Dealer Price
C20Z-6023-B	66-77	\$7 <sup>95</sup> EA	1)\$5 <sup>50</sup> 5)\$5 <sup>20</sup> 10)\$4 <sup>80</sup> 25)\$4 <sup>00</sup> 50)\$3 <sup>50</sup>

### ALTERNATOR BRACKET

OEM style brackets. Available in bright chrome or black.



C5ZZ-10145/51BK  
66-77: SB, black

List	Dealer Price
\$14 <sup>95</sup> SE	1)\$9 <sup>95</sup> 5)\$8 <sup>95</sup>



C5ZZ-10145/51-K  
66-77: SB, chrome

List	Dealer Price
\$16 <sup>95</sup> SE	1)\$10 <sup>25</sup> 5)\$9 <sup>50</sup>

### ALTERNATOR SPACER



This spacer is made from extruded aluminum and anodized the correct color.

SKU	Fits	Description	List	Dealer Price
C5AE-10A370-A	66-77	289 & 302, Gold	\$9 <sup>95</sup> EA	1)\$6 <sup>25</sup> 5)\$5 <sup>95</sup> 10)\$5 <sup>00</sup>

### SPARK PLUG WIRE SEPERATOR

Keeps spark plug wires neat and orderly.



B6A-12297-A  
66-77: Attach to wires

List	Dealer Price
\$2 <sup>00</sup> EA	1)\$1 <sup>25</sup> 10)\$1 <sup>10</sup> 25)\$0.95



B8Q-12297-A  
66-77: Mounts on valve covers

List	Dealer Price
\$3 <sup>95</sup> EA	1)\$2 <sup>50</sup> 10)\$2 <sup>25</sup> 25)\$1 <sup>95</sup>



## SPARK PLUG WIRE SEPERATOR SET

These Spark Plug Wire Separators are made of high-quality ABS plastic. Constructed to hold both standard 7mm and 8mm high-performance spark plug wires. Fits directly on valve cover clip. 4 piece sets.



B6AB8Q-12297-KA  
66-77: Black

List	Dealer Price
\$11 <sup>95</sup> SE	1) \$7 <sup>50</sup> 10) \$6 <sup>95</sup> 25) \$5 <sup>95</sup>



B6AB8Q-12297-KB  
66-77: Blue

List	Dealer Price
\$13 <sup>95</sup> SE	1) \$8 <sup>95</sup> 10) \$8 <sup>50</sup> 25) \$7 <sup>95</sup>



B6AB8Q-12297-KR  
66-77: Red

List	Dealer Price
\$13 <sup>95</sup> SE	1) \$8 <sup>95</sup> 10) \$8 <sup>50</sup> 25) \$7 <sup>95</sup>

## STARTER SOLENOID



This is a good quality starter solenoid at competitive price.

SKU	Fits	Description	List	Dealer Price
B6AZ-11450-A	66-77	Aftermarket	\$9 <sup>95</sup> EA	1) \$5 <sup>95</sup> 5) \$5 <sup>50</sup> 10) \$4 <sup>25</sup>

## COIL BRACKET



We made our bracket capable of holding the smaller coils on the market today as well the original coils. Zinc plated hex head bolt and nut included. Our bracket is also available in polished stainless steel.

SKU	Fits	Desc.	List	Dealer Price
C4DZ-12043-A	66-77	Black	\$12 <sup>95</sup> EA	1) \$8 <sup>50</sup> 5) \$8 <sup>25</sup> 10) \$7 <sup>80</sup> 25) \$6 <sup>75</sup>
C4DZ-12043-S	66-77	Stainless	\$16 <sup>95</sup> EA	1) \$10 <sup>95</sup> 5) \$10 <sup>60</sup> 10) \$10 <sup>25</sup> 25) \$8 <sup>95</sup>

## COILS



Stock to super high power, we have a coil for your needs.

SKU	Fits	Desc.	List	Dealer Price
B6A-12029-B	66-77	Yellow top	\$54 <sup>95</sup> EA	1) \$39 <sup>95</sup>
IGN-40001	66-77	Pertronix, Chrome	\$41 <sup>95</sup> EA	1) \$29 <sup>50</sup> 3) \$28 <sup>50</sup>
IGN-40001-2	66-77	Pertronix, Chrome, Hi-Po	\$49 <sup>95</sup> EA	1) \$32 <sup>50</sup> 3) \$29 <sup>95</sup>
IGN-40011	66-77	Pertronix, Black	\$35 <sup>95</sup> EA	1) \$24 <sup>75</sup> 3) \$23 <sup>50</sup>
IGN-40011-2	66-77	Pertronix, Black, Hi-Po	\$46 <sup>95</sup> EA	1) \$29 <sup>95</sup> 3) \$26 <sup>95</sup>

## PERFORMANCE HARMONIC DAMPER



Made from extremely tough nodular iron. Suitable for all street applications and mild racing applications. Designed for revving as high as 6500 rpm. Features gloss black finish with three sets of white timing marks.

SKU	Fits	Description	List	Dealer Price
80006	66-77	289, 302, 28 oz.	\$108 <sup>95</sup> EA	1) \$77 <sup>95</sup> 3) \$72 <sup>25</sup> 5) \$69 <sup>95</sup>
80009	66-77	390, 428, 50 oz	\$119 <sup>95</sup> EA	1) \$89 <sup>95</sup>

## HARMONIC DAMPER



High performance or stock specifications, these quality dampers are made in the USA.

SKU	Fits	Description	List	Dealer Price
C2DZ-6312-A	66-77	200, 6 cyl.	\$104 <sup>95</sup> EA	1) \$69 <sup>95</sup> 3) \$64 <sup>95</sup> 5) \$59 <sup>95</sup>
C5AZ-6316-B	66-77	289, except hi-po	\$99 <sup>95</sup> EA	1) \$64 <sup>95</sup> 3) \$59 <sup>95</sup> 5) \$54 <sup>95</sup>
C8AZ-6316-A	66-77	302, 3 bolt	\$129 <sup>95</sup> EA	1) \$89 <sup>95</sup> 3) \$84 <sup>95</sup> 5) \$79 <sup>95</sup>
C90E-6316-D	66-77	302, 3 bolt w/ lip	\$129 <sup>95</sup> EA	1) \$89 <sup>95</sup> 3) \$84 <sup>95</sup> 5) \$79 <sup>95</sup>
D20Z-6316-A	66-77	302, 4 bolt	\$129 <sup>95</sup> EA	1) \$89 <sup>95</sup> 3) \$84 <sup>95</sup> 5) \$79 <sup>95</sup>
C5AZ-6316-5.0	66-77	5.0 conversion, 3 bolt w/out lip	\$149 <sup>95</sup> EA	1) \$109 <sup>95</sup>
D2TE-6316-5.0	66-77	5.0 & 5.8 conversion, 3 bolt w/ lip	\$149 <sup>95</sup> EA	1) \$109 <sup>95</sup>

## EXHAUST SYSTEM

### BRONCO EXHAUST HEADERS

Our Bronco headers are made from extra-thick 16-gauge tubes and 3/8" laser cut flanges for extreme durability. Most competitors use thinner 18 gauge tubes with 5/16" stamped flanges. Includes premium gaskets, collectors and hardware. Available in raw steel, black low-temp paint or nickel plated



C6TZ-9430-BLK  
66-77: Bronco, Lack, low temperature paint

List	Dealer Price
\$204 <sup>95</sup> SE	1) \$162 <sup>95</sup>



C6TZ-9430-N  
66-77: Bronco, nickel plated

List	Dealer Price
\$229 <sup>95</sup> SE	1) \$184 <sup>95</sup>

C6TZ-9430-RAW  
66-77: Bronco, unpainted

List	Dealer Price
\$194 <sup>95</sup> SE	1) \$146 <sup>95</sup>

## EXHAUST MANIFOLD



Cast from high-quality molds for proper fit and appearance. Includes exhaust flange bolts, nuts and washers.

SKU	Fits	Description	List	Dealer Price
C30Z-9430-AR	66-67	Fits 170-200	\$124. <sup>95</sup> EA	1) \$89. <sup>95</sup> 2) \$84. <sup>95</sup> 3) \$82. <sup>50</sup>

## FUEL SYSTEM

### FUEL PUMP



These original style diaphragm pumps are all-new, not rebuilt. Includes mounting gasket. Not concours.

SKU	Fits	Description	List	Dealer Price
C3AZ-9350-Y	66-77	170-200	\$62. <sup>95</sup> EA	1) \$48. <sup>50</sup>
C5AZ-9350-B	66-77	289-302	\$49. <sup>95</sup> EA	1) \$34. <sup>95</sup>
C5UZ-9350-C	69	200 6 Cyl	\$49. <sup>95</sup> EA	1) \$34. <sup>95</sup>
D3TZ-9350-A	70-77	200 & 250 6 cyl.	\$49. <sup>95</sup> EA	1) \$34. <sup>95</sup>

### FUEL TANK SENDING UNIT



Original equipment copy. Our filters are the best OEM reproductions available. Includes brass float.

SKU	Fits	Description	List	Dealer Price
C6TZ-9275-AUX	66-77	Auxiliary fuel sending unit	\$74. <sup>95</sup> EA	1) \$44. <sup>95</sup> 5) \$39. <sup>95</sup> 10) \$34. <sup>95</sup> 25) \$27. <sup>50</sup> 100) \$25. <sup>95</sup>
C6TZ-9275-D	66-77	Fuel sending unit	\$74. <sup>95</sup> EA	1) \$44. <sup>95</sup> 5) \$39. <sup>95</sup> 10) \$34. <sup>95</sup> 25) \$27. <sup>50</sup> 100) \$25. <sup>95</sup>

### AFTERMARKET FUEL FILTER



W89258B  
66-77: 5/16" in/out, chrome with glass body

List	Dealer Price
\$8. <sup>95</sup> EA	1) \$6. <sup>25</sup>



W89418B  
66-77: 3/8" in/out, chrome

List	Dealer Price
\$7. <sup>95</sup> EA	1) \$5. <sup>25</sup> 3) \$4. <sup>50</sup>

## 1966-1977 Bronco Billet Fuel Caps

**New!**



Built from solid billet aluminum, these durable fuel caps feature a smooth polish surface with a tough outer grip. Available with a shallow cup design for 66-70 Broncos, or a deep cup design for 71-76 Broncos.



Shallow Cup



Deep Cup

SKU	Fits	Description	List	Dealer Price
C6TZ-9030-BL-1	66-70	Shallow cup	\$49. <sup>95</sup> EA	1) \$34. <sup>95</sup> 3) \$32. <sup>50</sup> 10) \$31. <sup>50</sup> 20) \$29. <sup>95</sup>
C6TZ-9030-BL-2	71-76	Deep cup	\$49. <sup>95</sup> EA	1) \$34. <sup>95</sup> 3) \$32. <sup>50</sup> 10) \$31. <sup>50</sup> 20) \$29. <sup>95</sup>





## HARDWARE

### MASTER BODY KIT



All concourse correct. These new kits include all sheet metal attaching hardware necessary to properly reassemble a Mustang body. Most kits include Battery tray, bumper guard-front, bumper guard rear, bumper guard mount brackets, bumper guard pads, cowl braces, door hinges, door

latches, fenders, fender pillar brackets, fender extensions, fender splash shields, fender splash shield brackets, floorboard hole covers, grille, grille supports, headlamp doors, hood and hood hinges, hood bumper, hood latch and catch, hood latch support, quarter panel extensions, stone deflector, suspension bumper brackets-front, trunk latch and striker, trunk lid and hinges, valance front and valance rear. Also includes assembly instructions.

SKU	Fits	Description	List	Dealer Price
MBK-C6BB-MASTER	66	Bronco	\$149 <sup>95</sup> SE	1) \$124 <sup>95</sup>
MBK-C7BB-MASTER	67	Bronco	\$149 <sup>95</sup> SE	1) \$124 <sup>95</sup>
MBK-C8BB-MASTER	68	Bronco	\$149 <sup>95</sup> SE	1) \$124 <sup>95</sup>
MBK-C9BB-MASTER	69-70	Bronco	\$149 <sup>95</sup> SE	1) \$124 <sup>95</sup>
MBK-D1BB-MASTER	71-77	Bronco	\$149 <sup>95</sup> SE	1) \$124 <sup>95</sup>

## HEATING & AC

### DEFROSTER HOSE



Hose is authentic flex style, made from original type polypropylene coated fabric.

SKU	Fits	List	Dealer Price
B5A-18556-C	66-77	\$13 <sup>95</sup> PR	1) \$8 <sup>25</sup> 5) \$7 <sup>95</sup> 10) \$7 <sup>25</sup> 50) \$6 <sup>00</sup>

### BYPASS HOT WATER ELBOW



This correct connector screws into the intake manifold. Heater hose attaches to the opposite end. Gold zinc, Silver Zinc, and chrome plated, highly-polished finish versions available.

SKU	Fits	Description	List	Dealer Price
C6AZ-18599-B	66-77	289-302, gold zinc	\$16 <sup>95</sup> EA	1) \$10 <sup>95</sup> 5) \$9 <sup>95</sup> 10) \$8 <sup>95</sup>
C6AZ-18599-C	66-77	289-302, chrome	\$21 <sup>95</sup> EA	1) \$14 <sup>95</sup> 5) \$13 <sup>95</sup> 10) \$12 <sup>95</sup>
C6AZ-18599-S	66-77	289-302, silver zinc	\$16 <sup>95</sup> EA	1) \$10 <sup>95</sup> 5) \$9 <sup>95</sup> 10) \$8 <sup>95</sup>

### HEATER CABLE CLAMP BRACKET



Secures cable to heater control assembly, heater plenum and heater box. Black oxide bracket with screw.

SKU	Fits	List	Dealer Price
378897-S	66-77	\$1 <sup>95</sup> EA	1) \$1 <sup>30</sup> 10) \$1 <sup>20</sup> 25) \$1 <sup>10</sup>

## INTERIOR PARTS & UPHOLSTERY

**For Interior Door Parts, see the DOOR PARTS section earlier in this catalog**

### BRONCO WINDSHIELD KNOB



Knobs are used to lock windshield in place. Exact copy of the originals, made with die-cast zinc.

SKU	Fits	Description	List	Dealer Price
C6TZ-9603818-B	66-77	Chrome, very high quality.	\$49 <sup>95</sup> PR	1) \$32 <sup>50</sup> 5) \$30 <sup>95</sup> 10) \$29 <sup>95</sup> 25) \$25 <sup>95</sup>

### DIRECTIONAL LIGHT LEVER

Perfect copies of the originals to replace those rusted or tweaked originals.



C5ZZ-13305-A  
66: Chrome

List	Dealer Price
\$7 <sup>95</sup> EA	1) \$4 <sup>95</sup> 10) \$4 <sup>50</sup> 25) \$3 <sup>95</sup> 50) \$3 <sup>50</sup>



C7ZZ-13305-A  
67-72: Chrome

List	Dealer Price
\$7 <sup>95</sup> EA	1) \$4 <sup>95</sup> 10) \$4 <sup>50</sup> 25) \$3 <sup>95</sup> 50) \$3 <sup>50</sup>



C7ZZ-13305-S  
67-72: Satin

List	Dealer Price
\$8 <sup>50</sup> EA	1) \$5 <sup>50</sup> 10) \$5 <sup>25</sup>

## CIGARETTE LIGHTER SOCKET AND RETAINER



Made by the original supplier. Fits our cigarette lighters.

SKU	Fits	List	Dealer Price
C4AZ-15055-B	66-77	\$4. <sup>95</sup> EA	1) \$3. <sup>25</sup> 10) \$2. <sup>95</sup> 25) \$2. <sup>75</sup>

## BRONCO FLOOR MAT



Quality EPDM rubber with textured surface.

SKU	Fits	Description	List	Dealer Price
BRONCO-MAT-FLBK	66-77	Full, black	\$239. <sup>95</sup> SE	1) \$189. <sup>95</sup> 10) \$154. <sup>95</sup>
BRONCO-MAT-FTBK	66-77	Front only, black	\$142. <sup>95</sup> SE	1) \$99. <sup>95</sup> 10) \$97. <sup>95</sup>

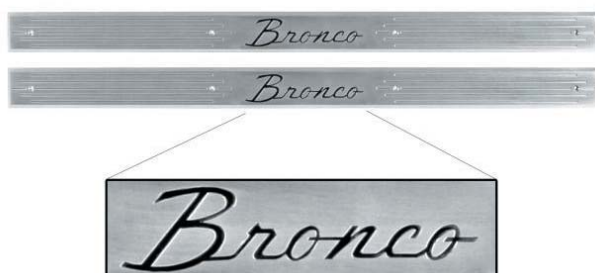
## BRONCO DASH PAD



Nice reproduction. Made in the USA.

SKU	Fits	Desc.	List	Dealer Price
C8TZ-6504290-BK	68-77	Black	\$249. <sup>95</sup> EA	1) \$178. <sup>95</sup> 2) \$172. <sup>95</sup> 3) \$168. <sup>95</sup> 5) \$164. <sup>95</sup>

## BRONCO SILL PLATE



Another first from Scott Drake, 1966-77 Bronco Billet Sill Plates! These sill plates are made from beautiful, billet aluminum and feature the Bronco script stamped in the center. Officially licensed by Ford. Sold as a pair and includes stainless steel mounting screws.



SKU	Fits	Description	List	Dealer Price
C6TZ-6513208-B*	66-77	Bronco, billet alum.	\$119. <sup>95</sup> PR	1) \$77. <sup>95</sup>

## COURTESY LIGHT BRACKET



Stamped metal bracket mounts under dash. Socket not included.

SKU	Fits	List	Dealer Price
COAZ-13763-A	66-77	\$8. <sup>95</sup> EA	1) \$5. <sup>95</sup> 5) \$4. <sup>95</sup> 25) \$3. <sup>95</sup> 50) \$3. <sup>25</sup>

## COURTESY LIGHT BULB



Replacement bulbs from O.E.M. suppliers to the auto industry. Excellent quality bulbs.

SKU	Fits	List	Dealer Price
631	66-77	\$3. <sup>95</sup> EA	1) \$1. <sup>90</sup> 10) \$1. <sup>25</sup>

## DOME LIGHT ASSEMBLY



Our dome light assembly is designed to replace the original dome light. We made a bright chrome base with a brighter than original bulb to really improve lighting inside the car. Includes mounting hardware, electrical connectors, and our reproduction dome lens and chrome bezel to make this a quick and simple project.

SKU	Fits	List	Dealer Price
COAF-13A719-B	66-77	\$32. <sup>95</sup> KI	1) \$19. <sup>95</sup> 5) \$19. <sup>50</sup> 10) \$18. <sup>95</sup> 25) \$16. <sup>50</sup>

## DOME LIGHT HOUSING

Plastic injected, dome lamp housing, with quality chrome plating.



D6UZ-13788-A  
76-77

List	Dealer Price
\$24. <sup>95</sup> EA	1) \$16. <sup>25</sup> 5) \$15. <sup>50</sup> 10) \$14. <sup>95</sup>

## DOME LIGHT LENS

High quality injection molded parts, exactly like the originals. Lens is milk white.



D1AZ-13783-B  
76-77

List	Dealer Price
\$10. <sup>95</sup> EA	1) \$7. <sup>50</sup>

**BRONCO SUN VISOR**

Made from high quality heavy duty vinyl. Very close attention was paid to detail.

SKU	Fits	Description	List	Dealer Price
C7TZ-6504104-BK	66-77	Black	\$79 <sup>95</sup> PR	1) \$64 <sup>95</sup>
C7TZ-6504104-PR	66-77	Black	\$79 <sup>95</sup> PR	1) \$64 <sup>95</sup>

**SUN VISOR BRACKET & ROD**

Set includes brackets with visor pivots and inner rods. These are perfect parts! Made from polished stainless steel.

SKU	Fits	Description	List	Dealer Price
C6TZ-9604110/1S	66-77	Bronco, stainless	\$34 <sup>95</sup> PR	1) \$22 <sup>75</sup> 5) \$22 <sup>25</sup> 10) \$20 <sup>95</sup> 25) \$17 <sup>95</sup>

**ACCELERATOR PEDAL**

These steel reinforced parts are molded from high quality rubber for a long life and great appearance.

SKU	Fits	Description	List	Dealer Price
CSAZ-9735-D	66-77	Bronco	\$13 <sup>95</sup> EA	1) \$7 <sup>95</sup> 5) \$7 <sup>45</sup> 10) \$6 <sup>95</sup>

**BRAKE PEDAL PAD**

Made from high-quality E.P.D.M. molded rubber. Available in standard style like the original, or with raised Bronco script molded into pads for an extra special touch. (For Bronco's with factory automatic, use C6TZ-2457-B).



B7A-2457-A  
66-79: Original design, fits manual brake or clutch

List	Dealer Price
\$4 <sup>95</sup> EA	1) \$3 <sup>25</sup> 5) \$2 <sup>75</sup> 10) \$2 <sup>50</sup> 50) \$2 <sup>25</sup>



C6TZ-2457-A  
66-89: Bronco script, fits manual brake or clutch

List	Dealer Price
\$9 <sup>95</sup> EA	1) \$6 <sup>50</sup> 10) \$6 <sup>00</sup> 25) \$5 <sup>20</sup>



C6TZ-2457-B  
66-89: Bronco script (for Auto Trans)

List	Dealer Price
\$12 <sup>95</sup> EA	1) \$8 <sup>50</sup> 5) \$7 <sup>95</sup> 10) \$7 <sup>50</sup>

**AFTERMARKET SEAT BELTS**

Great looking replacement style seat belts. All feature a mid sixties period look which includes a chrome buckle. Available in black or parchment.

SKU	Fits	Description	List	Dealer Price
SB-BK	66-77	Black	\$24 <sup>95</sup> EA	1) \$17 <sup>50</sup> 5) \$16 <sup>50</sup> 50) \$15 <sup>95</sup>
SB-PR	66-77	Parchment	\$24 <sup>95</sup> EA	1) \$17 <sup>50</sup> 5) \$16 <sup>50</sup> 50) \$15 <sup>95</sup>

**BLACK WRINKLE SEAT BELT**

Exclusively from Scott Drake. We had these seat belts powder coated black with a textured finish to more closely resemble original style seat belts. Includes mounting hardware.

SKU	Fits	Description	List	Dealer Price
SB-BK-DLX	66-77	Black wrinkle	\$32 <sup>95</sup> EA	1) \$22 <sup>95</sup> 10) \$20 <sup>95</sup>

### SEAT ADJUSTER KNOB



Knob to adjust forward and back motion of seat slider.

SKU	Fits	List	Dealer Price
CSAZ-6261753-BA	66-77	\$4. <sup>95</sup> EA	1)\$3. <sup>25</sup> 5)\$2. <sup>95</sup>

### SEAT BACK ADJUSTING KIT



Includes pair of chrome screw adjusters, nuts and washers, heavy duty plastic rest plates and attaching screws.

SKU	Fits	List	Dealer Price
C1DZ-6461643	66	\$9. <sup>95</sup> KI	1)\$6. <sup>25</sup> 5)\$5. <sup>95</sup> 10)\$5. <sup>25</sup> 50)\$5. <sup>50</sup>

### FRONT SEAT HINGE SHAFT RETAINER CLIP SET



Special clip used to secure front seat back to seat bottom. Two required per seat.

SKU	Fits	Description	List	Dealer Price
352358-SK	66-77	Set of 4	\$2. <sup>50</sup> SE	1)\$1. <sup>50</sup> 25)\$1. <sup>25</sup> 50)\$0.95

### FRONT SEAT WASHER



Install on seat hinge shaft between the seat and hinge to prevent hinge from wearing through upholstery.

SKU	Fits	Description	List	Dealer Price
373249-S	66-77	Set of 4	\$2. <sup>95</sup> SE	1)\$1. <sup>95</sup> 10)\$1. <sup>25</sup> 25)\$1. <sup>50</sup>

### SEAT HINGE REPAIR BRACKET



A very common breaking point can now be easily repaired.

SKU	Fits	Description	List	Dealer Price
D7ZZ-69618C46-A	68-77	Inner, LH	\$29. <sup>95</sup> EA	1)\$21. <sup>50</sup>

### SEAT HINGE COVER

These hinge covers are exact copies of the originals. Exterior molded plastic.



C8TZ-656192/5B  
67-77: Bronco, black

List	Dealer Price
\$34. <sup>95</sup> SE	1)\$22. <sup>25</sup> 10)\$20. <sup>95</sup>



C8TZ-656192/5N  
67-77: Bronco, neutral

List	Dealer Price
\$34. <sup>95</sup> SE	1)\$22. <sup>25</sup> 10)\$20. <sup>95</sup>

### SEAT LATCH HANDLE AND BEZEL SET

Exact detail and beautiful chrome. These handles & bezels are commonly pitted, broken or missing. Our 6 piece kit does both front seats.



C8AZ-6262622/72A  
68-70

List	Dealer Price
\$22. <sup>95</sup> KI	1)\$14. <sup>95</sup> 5)\$14. <sup>50</sup> 10)\$13. <sup>95</sup>



C9AZ-6262622/72A  
71-77

List	Dealer Price
\$23. <sup>95</sup> SE	1)\$15. <sup>50</sup> 5)\$15. <sup>25</sup> 10)\$14. <sup>50</sup>

### SEAT STOP BUMPER KIT



These seat bumpers install between the seat cushion and seat back. Fits many other Ford/Mercury seats.

SKU	Fits	List	Dealer Price
C8ZZ-6560310/1	68-77	\$7. <sup>95</sup> KI	1)\$5. <sup>25</sup> 10)\$4. <sup>80</sup> 25)\$4. <sup>25</sup>



**FRONT/REAR SEAT UPHOLSTERY**

Precision made from the same heavy duty vinyl and attention to detail originally used by Ford. Heavy 32 ounce vinyl and solid well cord. Patterns are die cut for precision. Kits do not include hog rings for installation. **Picture for reference only, actual pattern is different.**

SKU	Fits	Description	List	Dealer Price
67-BR-FRONT-BK	67-77	Front bucket, black	\$129. <sup>95</sup> SE	1) \$101. <sup>95</sup>
67-BR-FRONT-PR	67-77	Front bucket, parchment	\$129. <sup>95</sup> SE	1) \$101. <sup>95</sup>
67-BR-REAR-BK	67-77	Rear bench, black	\$114. <sup>95</sup> SE	1) \$84. <sup>95</sup>
67-BR-REAR-PR	67-77	Rear bench, parchment	\$114. <sup>95</sup> SE	1) \$84. <sup>95</sup>

**SEAT CUSHION**

Replace your old worn out seat cushions. Excellent reproductions made from the same type of foam as the originals. **Picture for reference only.**

SKU	Fits	Description	List	Dealer Price
C8ZZ-6560050/1S	67-77	Std./dlx.	\$54. <sup>95</sup> EA	1) \$36. <sup>95</sup> 3) \$34. <sup>95</sup> 5) \$32. <sup>95</sup>

**HOG RING**

Metal hog ring packs for easier upholstery installation. 150 piece pack contains enough for 1 seat, while the bigger 500 piece pack contains enough for multiple projects.

SKU	Fits	Description	List	Dealer Price
377595-K	66-77	Set of 150	\$4. <sup>95</sup> KI	1) \$2. <sup>95</sup> 10) \$2. <sup>75</sup> 25) \$2. <sup>50</sup>
377595-S	66-77	Set of 500	\$7. <sup>95</sup> KI	1) \$4. <sup>80</sup> 5) \$4. <sup>50</sup> 10) \$3. <sup>95</sup>

**HOG RING KIT**

Our hog ring installation kits each feature pliers and 150 hog rings included (enough for 1 seat).

SKU	Fits	Description	List	Dealer Price
PLIERSET-E	66-77	Economy, simple pliers	\$7. <sup>45</sup> KI	1) \$5. <sup>00</sup> 5) \$4. <sup>75</sup> 10) \$4. <sup>50</sup>
PLIERSET-M	66-77	Medium, upgrade cast pliers	\$13. <sup>95</sup> KI	1) \$8. <sup>95</sup>
PLIERSET-P	66-77	Pro, spring-loaded pliers	\$22. <sup>95</sup> KI	1) \$14. <sup>95</sup>

**KEYS, LOCKS & LATCHES****IGNITION CYLINDER AND KEYS**

Our ignition lock sets are all new. Two keys included.

SKU	Fits	List	Dealer Price
C50Z-11582-A	66-77	\$8. <sup>50</sup> EA	1) \$4. <sup>50</sup> 5) \$3. <sup>95</sup>

**DOOR & IGNITION LOCK KIT**

This convenient kit is made just like the original. Made from die-cast zinc, with stainless steel trim. Includes 2 keys.

SKU	Fits	Description	List	Dealer Price
C5DZ-6222050-A	66-77	Std. keys	\$32. <sup>95</sup> SE	1) \$20. <sup>95</sup> 5) \$18. <sup>95</sup> 10) \$17. <sup>95</sup> 50) \$14. <sup>95</sup> 100) \$11. <sup>00</sup>

**LITERATURE****BRONCO BODY AND INTERIOR MANUAL**

This manual illustrates through factory drawings the interior and body components of the 1966 through 1970 Bronco. This book also supplies many important factory part numbers.

SKU	Fits	Description	List	Dealer Price
AM-149	66-70	Bronco	\$26. <sup>00</sup> EA	1) \$18. <sup>95</sup> 25) \$17. <sup>95</sup>



## MIRRORS

### REAR VIEW MIRROR

Improved mirror with superior quality crimping of frame to glass.



C7AZ-17700-G  
68-69: Day/Night, concours

List	Dealer Price
\$53 <sup>95</sup> EA	1) \$42 <sup>95</sup>



C8AZ-17700-A  
68-77: Day/Night, aftermarket

List	Dealer Price
\$28 <sup>95</sup> EA	1) \$19 <sup>95</sup>

### REAR VIEW MIRROR ARM

Pressure die cast, with quality chrome. Replaces one of the most visible interior parts.



C2SZ-17690-F  
68-69

List	Dealer Price
\$15 <sup>95</sup> SE	1) \$9 <sup>95</sup> 5) \$8 <sup>95</sup> 25) \$6 <sup>95</sup>

### REAR VIEW MIRROR MOUNT



Special cast-metal bracket glues to windshield. Plain finish. Exact detail.

SKU	Fits	List	Dealer Price
C8AZ-17698-A	66-69	\$7 <sup>95</sup> EA	1) \$5 <sup>20</sup> 10) \$4 <sup>80</sup>

### 1966 EXTERIOR MIRRORS



These outside mirrors feature flawless chrome and a perfect fit. Mirrors fit both left and right hand side, but we recommend our mirrors with convex glass for the right hand side because they have a greater field of vision. All mirrors come with base pad and mounting screws. Available in bright chrome

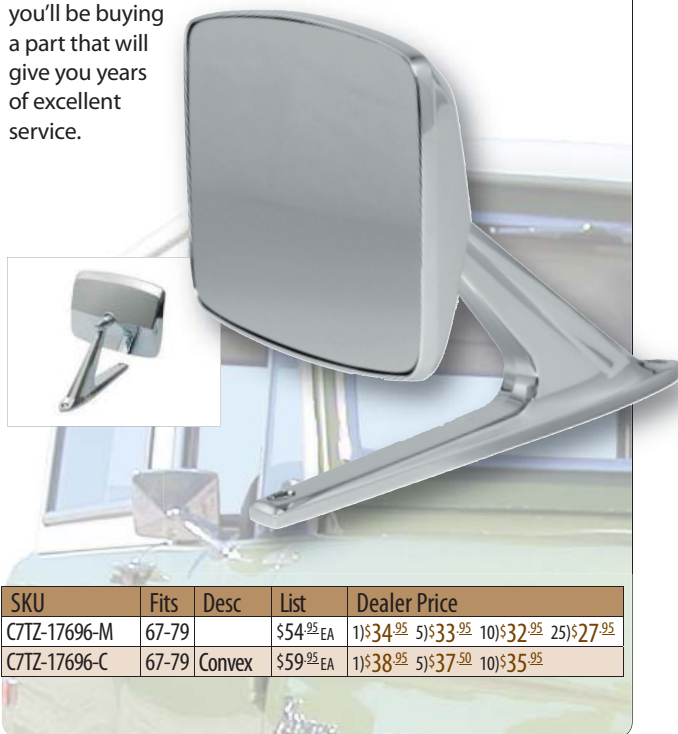
like the originals, or with a satin chrome finish for a custom look.

SKU	Fits	Description	List	Dealer Price
C3RZ-17696-A	66	Chrome, economy	\$26 <sup>95</sup> EA	1) \$16 <sup>00</sup> 5) \$15 <sup>00</sup> 10) \$14 <sup>00</sup> 20) \$13 <sup>00</sup> 30) \$12 <sup>00</sup>
C3RZ-17696-R	66	Chrome, show-quality	\$45 <sup>95</sup> EA	1) \$29 <sup>95</sup> 5) \$28 <sup>95</sup> 10) \$27 <sup>50</sup>
C3RZ-17696-C	66	Chrome, Convex (RH)	\$48 <sup>95</sup> EA	1) \$31 <sup>95</sup> 5) \$29 <sup>95</sup> 10) \$28 <sup>95</sup>
C3RZ-17696-RS	66	Satin, show-quality	\$49 <sup>95</sup> EA	1) \$32 <sup>50</sup> 5) \$31 <sup>50</sup> 10) \$29 <sup>95</sup>
C3RZ-17696-CS	66	Satin, Convex (RH)	\$52 <sup>95</sup> EA	1) \$34 <sup>50</sup> 5) \$33 <sup>50</sup> 10) \$31 <sup>95</sup>

## 1967-1977

## Exterior Bronco Mirrors

These incredible exterior bronco mirrors from Scott Drake are an exact reproduction of the original, not just another close copy. Made from high-quality pressure-die-cast zinc, and finished with our extra-durable, super-smooth tripple-nickle chrome plating. Mirrors contain superior quality mirror glass, with convex glass in the right-hand model for improved field of view. Mirrors include pad and mounting hardware. Hand assembled, inspected and packaged in the USA. With the attention to detail we've given these mirrors, you can be sure you'll be buying a part that will give you years of excellent service.



SKU	Fits	Desc	List	Dealer Price
C7TZ-17696-M	67-79		\$54 <sup>95</sup> EA	1) \$34 <sup>95</sup> 5) \$33 <sup>95</sup> 10) \$32 <sup>95</sup> 25) \$27 <sup>95</sup>
C7TZ-17696-C	67-79	Convex	\$59 <sup>95</sup> EA	1) \$38 <sup>95</sup> 5) \$37 <sup>50</sup> 10) \$35 <sup>95</sup>

## PAINT & RESTORATION SUPPLIES

### ACCUMATCH™ ENGINE PAINT



AccuMatch™ Engine Paints are a complete line of popular colors and formulas created specifically for engine compartment applications. Engine paints come with higher heat tolerances to resist cracking and flaking, and are chemical resistant to resist corrosion from common engine compartment fluids such as gasoline and brake fluid. Formulated to color-match original OEM shades. Withstands temperatures up to 350° F



SKU	Fits	Description	List	Dealer Price
EP-1724-A	66-77	V8, black	\$6 <sup>25</sup> EA	1)\$4 <sup>25</sup> 6)\$4 <sup>50</sup> 12)\$3 <sup>95</sup>
EP-1923-A	66-77	Dark blue	\$6 <sup>25</sup> EA	1)\$4 <sup>25</sup> 6)\$4 <sup>50</sup> 12)\$3 <sup>95</sup>
EP-0046-A	66-77	Light blue	\$6 <sup>25</sup> EA	1)\$4 <sup>25</sup> 6)\$4 <sup>50</sup> 12)\$3 <sup>95</sup>

### ACCUMATCH™ HI-TEMP PAINT



The Hi-Temp Gray paint from AccuMatch™ Products, is formulated specifically to withstand high engine compartment temperatures (up to 1200°. Leaves pieces with a natural cast-iron finish with less applications due to its extra-high pigment content. • Formulated to withstand extreme temperatures up to 1200°F • Perfect for headers & exhaust manifolds



SKU	Fits	Description	List	Dealer Price
RP-102	66-77	Cast iron gray	\$9 <sup>25</sup> EA	1)\$6 <sup>50</sup> 6)\$6 <sup>25</sup> 12)\$5 <sup>95</sup>

### ACCUMATCH™ UNDERCOATING



AccuMatch™ automotive undercoatings are designed for complete undercarriage protection and sound-deadening. Available in either a standard asphalt-based formula, and also in our new rubberized formula for extra protection and sound-deadening properties. Undercoatings come in extra large 15oz cans for even the biggest jobs.



SKU	Fits	Description	List	Dealer Price
RP-300	66-77	Black, rubberized	\$14 <sup>25</sup> EA	1)\$9 <sup>50</sup>
RP-301	66-77	Black, asphalt	\$8 <sup>25</sup> EA	1)\$5 <sup>25</sup> 6)\$5 <sup>50</sup> 12)\$4 <sup>95</sup>

### ACCUMATCH™ DETAIL PAINT



Our detail paints give a natural looking finish to metal surfaces.

SKU	Fits	Description	List	Dealer Price
RP-100	64-73	Steel gray	\$8 <sup>25</sup> EA	1)\$5 <sup>25</sup> 6)\$5 <sup>50</sup> 12)\$5 <sup>25</sup> 24)\$4 <sup>95</sup>
RP-101	64-73	Cast iron gray	\$8 <sup>25</sup> EA	1)\$5 <sup>25</sup> 6)\$5 <sup>50</sup> 12)\$5 <sup>25</sup> 24)\$4 <sup>95</sup>
RP-103	64-73	OEM detail black	\$8 <sup>25</sup> EA	1)\$6 <sup>25</sup> 6)\$5 <sup>25</sup> 12)\$5 <sup>50</sup> 24)\$5 <sup>25</sup>
RP-104	64-73	Cast alum.	\$8 <sup>25</sup> EA	1)\$5 <sup>25</sup> 6)\$5 <sup>50</sup> 12)\$5 <sup>25</sup> 24)\$4 <sup>95</sup>

## SHEET METAL & BODY PARTS

### REPRODUCTION FENDER



Our reproduction fenders offer an inexpensive alternative to purchasing O.E.M. parts, with only a slight loss in fit when compared with genuine Ford parts. Shipped painted black and deburred.

SKU	Fits	Description	List	Dealer Price
D7TZ-16005-A	66-77	Bronco, RH	\$149 <sup>25</sup> EA	1)\$99 <sup>25</sup>
D7TZ-16006-A	66-77	Bronco, LH	\$149 <sup>25</sup> EA	1)\$99 <sup>25</sup>

### HOOD LATCH

Stamped, 304 stainless steel construction. Brightly polished and built to last. Includes hardware.



C6TZ-16892-S  
66-77

List	Dealer Price
\$26 <sup>25</sup> EA	1)\$17 <sup>25</sup> 5)\$16 <sup>95</sup> 10)\$16 <sup>25</sup> 25)\$14 <sup>50</sup>

### HOOD LATCH PIN



Highly-polished 304 stainless steel. Rust proof construction will not corrode. Includes spring.

SKU	Fits	List	Dealer Price
C6TZ-16929-SK	66-77	\$29 <sup>25</sup> EA	1)\$19 <sup>50</sup> 5)\$18 <sup>25</sup> 10)\$17 <sup>95</sup> 25)\$15 <sup>60</sup>

## HOOD PROP ROD



This prop rod is made from high quality 304 stainless steel rod and polished to really catch the eye. Stainless steel washers and spring also included. Total rod length is 35 inches but can be cut to length if desired.

SKU	Fits	Description	List	Dealer Price
C6TZ-16826-S	66-77	Bronco, stainless	\$24. <sup>95</sup> KI	1) \$16. <sup>25</sup> 5) \$15. <sup>50</sup> 10) \$14. <sup>95</sup> 25) \$12. <sup>95</sup>

## HOOD TO COWL BUMPER

Rubber bumpers molded to metal threaded inserts. Exact copy of 68-70, but will fit 71-77.



C5ZZ-16763-B  
68-70

List	Dealer Price
\$3. <sup>00</sup> EA	1) \$1. <sup>70</sup> 10) \$1. <sup>40</sup> 25) \$1. <sup>25</sup>

## LH BRONCO FLOOR PAN



Replacement, heavy 16 gauge left hand floor pan for all 1966 through 1977 Broncos. The dimensions are: 30" along the hump, 24 3/4" along the door, 22 1/2" across the top and 21 1/2" across the back.

SKU	Fits	Description	List	Dealer Price
B107LH	66-77	Bronco, LH	\$74. <sup>95</sup> EA	1) \$48. <sup>95</sup>

## RH BRONCO FLOOR PAN



Replacement, heavy 16 gauge right hand floor pan for all 1966 through 1977 Broncos.

SKU	Fits	Description	List	Dealer Price
B107RH	66-77	Bronco, RH	\$74. <sup>95</sup> EA	1) \$48. <sup>95</sup>

## QUARTER PANEL SKIN



Our replacement skins eliminate much of the demolition work that accompanies complete quarter panel replacement.

SKU	Fits	Description	List	Dealer Price
C6TZ-6527840-S	66-77	RH	\$84. <sup>95</sup> EA	1) \$52. <sup>95</sup>
C6TZ-6527841-S	66-77	LH	\$84. <sup>95</sup> EA	1) \$52. <sup>95</sup>

## TAIL LIGHT PANEL

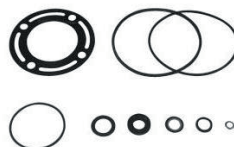


Carefully formed to facilitate a painless replacement, these panels offer an affordable repair for damaged originals.

SKU	Fits	Description	List	Dealer Price
C9TZ-65280A58-A	66-77	Bronco, RH	\$48. <sup>95</sup> EA	1) \$32. <sup>95</sup>
C9TZ-65280A59-A	66-77	Bronco, LH	\$48. <sup>95</sup> EA	1) \$32. <sup>95</sup>

## STEERING

### POWER STEERING PUMP SEAL KIT



Provides everything needed to do a pump rebuild.

SKU	Fits	Description	List	Dealer Price
D1AZ-3B584-A	66-77	Ford pump	\$9. <sup>95</sup> KI	1) \$5. <sup>95</sup>

### STEERING COLUMN COVER



We added the Bronco script to the top portion of our high quality abs plastic cover. The raised script is then given a bright chrome finish that really makes the Bronco name pop out. This a "must have" accessory for any Bronco lover.

SKU	Fits	List	Dealer Price
C8TZ-9601698A/B	68-77	\$24. <sup>95</sup> SE	1) \$16. <sup>25</sup> 10) \$15. <sup>75</sup> 25) \$14. <sup>95</sup>

### STEERING SHAFT SPRING



This is the spring that goes over the column and inside the collar to provide spring tension for the horn ring.

SKU	Fits	List	Dealer Price
C3DZ-3520-A	66-77	\$5. <sup>95</sup> EA	1) \$3. <sup>95</sup> 5) \$3. <sup>75</sup>

**HORN BUTTON SPRING**

Wire spring used with horn ring. Painted.

SKU	Fits	List	Dealer Price
CODZ-13A807-B	66-77	\$4. <sup>95</sup> EA	1) \$2. <sup>50</sup> 10) \$1. <sup>95</sup> 25) \$1. <sup>60</sup>

**HORN RING RETAINER**

Correct original design. Plastic injected nylon is more wear and crack resistant.

SKU	Fits	Description	List	Dealer Price
D1TZ-13A809-A	66-73	Alternator	\$1. <sup>95</sup> EA	1) \$1. <sup>20</sup> 10) \$0.95 25) \$0.75 50) \$0.65

**SUSPENSION****LOWER COIL SPRING RETAINER**

High quality steel and painted natural gray to look good for a long time. Also available in highly polished stainless steel.

SKU	Fits	Description	List	Dealer Price
C6TZ-5B300-A	66-77	Gray, lower	\$18. <sup>95</sup> EA	1) \$12. <sup>35</sup> 10) \$11. <sup>40</sup> 25) \$10. <sup>50</sup>
C6TZ-5B300-AS	66-77	Stainless, lower	\$24. <sup>95</sup> EA	1) \$16. <sup>25</sup> 10) \$14. <sup>95</sup> 25) \$13. <sup>95</sup>

**UPPER COIL SPRING RETAINER**

High quality steel and painted natural gray to look good for a long time. Also available in highly polished stainless steel.

SKU	Fits	Description	List	Dealer Price
C6TZ-5B300-B	66-77	Gray, upper	\$4. <sup>95</sup> EA	1) \$3. <sup>25</sup> 10) \$3. <sup>15</sup> 25) \$2. <sup>95</sup>
C6TZ-5B300-BS	66-77	Stainless, upper	\$6. <sup>95</sup> EA	1) \$4. <sup>50</sup> 10) \$4. <sup>25</sup> 25) \$3. <sup>95</sup>

**COIL SPRING SEAT**

High quality steel and painted natural gray to look good for a long time. Also available in highly polished stainless steel.

SKU	Fits	Description	List	Dealer Price
D1TZ-5A307-A	71-77	Gray	\$22. <sup>95</sup> EA	1) \$14. <sup>95</sup> 10) \$13. <sup>95</sup> 25) \$12. <sup>95</sup>
D1TZ-5A307-AS	71-77	Stainless	\$29. <sup>95</sup> EA	1) \$19. <sup>50</sup> 10) \$17. <sup>95</sup> 25) \$16. <sup>95</sup>

**TRANSMISSION & DRIVETRAIN****CLUTCH SETS**

Excellent upgrade clutch set up. A must for towing or high performance applications. All new components include pressure plate, clutch disc, throwout bearing and alignment tool.

SKU	Fits	Description	List	Dealer \$
CSZZ-7563-K	66-77	8 Cylinder 10" Clutch	\$129. <sup>95</sup> KI	1) \$99. <sup>95</sup>
CSZZ-7563-ZK	66-77	High performance, 10" Clutch	\$209. <sup>95</sup> KI	1) \$164. <sup>95</sup>

**CLUTCH FORK PIVOT**

Heavy duty, Hardware included.

SKU	Fits	Description	List	Dealer Price
B9AZ-7522-B	66-67	SB, 289	\$16. <sup>95</sup> EA	1) \$11. <sup>95</sup>

**CLUTCH ROD BUSHING**

Nylon plastic injected. Correct original design. Protects clutch and equalizer rods and removes excess play.

SKU	Fits	List	Dealer Price
COAZ-7526-B	66-77	\$2. <sup>95</sup> PR	1) \$1. <sup>95</sup> 5) \$1. <sup>75</sup> 10) \$1. <sup>50</sup>

**CLUTCH ROD TO FIREWALL SEAL**

Molded rubber, mount in firewall.

SKU	Fits	List	Dealer Price
C60Z-7A533-C	68-77	\$13. <sup>95</sup> EA	1) \$8. <sup>95</sup> 5) \$7. <sup>95</sup> 10) \$6. <sup>95</sup>



### CLUTCH EQUALIZER REPAIR KIT



A must for all manual transmissions. Includes felt washers, nylon ball bushings, washer and clevis clips. Improves clutch operation.

SKU	Fits	Desc.	List	Dealer Price
C1DD-7543-KIT	66-77	6 cyl., SB	\$13 <sup>95</sup> KI	1)\$8 <sup>95</sup> 5)\$7 <sup>95</sup> 10)\$7 <sup>50</sup> 25)\$7 <sup>45</sup> 50)\$6 <sup>95</sup>

### TRANSMISSION FLYWHEEL



Precision machined from American steel. Ring gear included.

SKU	Fits	Description	List	Dealer Price
C6TZ-6375-C	68-73	164 teeth, 302, 351	\$199 <sup>95</sup> EA	1)\$144 <sup>95</sup> 2)\$134 <sup>95</sup>

### MANUAL TRANSMISSION MASTER REBUILD KIT



Master rebuild kits include brass synchro rings, input and output oil seals, tailshaft bushing, input and output bearings and all paper gaskets. Most also include thrust washers, needle bearings and small parts kit. Please refer to photo for contents of each kit.

SKU	Fits	Description	List	Dealer \$
CSZZ-7005-R4T	66-77	4 speed T/L, V8 except 427, 428, 429	\$134 <sup>95</sup> KI	1)\$94 <sup>95</sup>

### SPEEDOMETER CABLE

Quality aftermarket copy.



SKU	Fits	Description	List	Dealer Price
D6TZ-17260-A	66-77	Bronco, 71" long	\$21 <sup>95</sup> EA	1)\$14 <sup>95</sup> 5)\$13 <sup>95</sup> 10)\$12 <sup>50</sup>

### SPEEDOMETER GEAR



Injection molded nylon. Please confirm teeth count and teeth direction. Note: Toploaders have reversed tooth direction. Also note: color matching does not guarantee correct gear. Note: not returnable if package is opened.

SKU	Fits	Description	List	Dealer Price
CODZ-17271-A	66-77	16 teeth, auto. & 3 speed	\$13 <sup>95</sup> EA	1)\$8 <sup>95</sup> 5)\$6 <sup>95</sup> 10)\$5 <sup>95</sup>
CODZ-17271-C	66-77	17 teeth, auto. & 3 speed	\$13 <sup>95</sup> EA	1)\$8 <sup>95</sup> 5)\$6 <sup>95</sup> 10)\$5 <sup>95</sup>
CODD-17271-B	66-77	18 teeth, auto. & 3 speed (yellow)	\$13 <sup>95</sup> EA	1)\$8 <sup>95</sup> 5)\$6 <sup>95</sup> 10)\$5 <sup>95</sup>
CODZ-17271-B	66-77	19 teeth, auto. & 3 speed (pink)	\$13 <sup>95</sup> EA	1)\$8 <sup>95</sup> 5)\$6 <sup>95</sup> 10)\$5 <sup>95</sup>
C1DZ-17271-A	66-77	20 teeth, auto. & 3 speed (black)	\$13 <sup>95</sup> EA	1)\$8 <sup>95</sup> 5)\$6 <sup>95</sup> 10)\$5 <sup>95</sup>
CODZ-17271-D	66-77	21 teeth, auto. & 3 speed	\$13 <sup>95</sup> EA	1)\$8 <sup>95</sup> 5)\$6 <sup>95</sup> 10)\$5 <sup>95</sup>
C2DZ-17271-J	66-77	16 teeth, 4 speed T/L (orange)	\$13 <sup>95</sup> EA	1)\$8 <sup>95</sup> 5)\$6 <sup>95</sup> 10)\$5 <sup>95</sup>
C2DZ-17271-G	66-77	17 teeth, 4 speed T/L (purple)	\$13 <sup>95</sup> EA	1)\$8 <sup>95</sup> 5)\$6 <sup>95</sup> 10)\$5 <sup>95</sup>
C2DZ-17271-A	66-77	18 teeth, 4 speed Top-Loader	\$13 <sup>95</sup> EA	1)\$8 <sup>95</sup> 5)\$6 <sup>95</sup> 10)\$5 <sup>95</sup>
C2DZ-17271-B	66-77	19 teeth, 4 speed Top-Loader	\$13 <sup>95</sup> EA	1)\$8 <sup>95</sup> 5)\$6 <sup>95</sup> 10)\$5 <sup>95</sup>
C2DZ-17271-C	66-77	20 teeth, 4 speed Top-Loader	\$13 <sup>95</sup> EA	1)\$8 <sup>95</sup> 5)\$6 <sup>95</sup> 10)\$5 <sup>95</sup>
C2DZ-17271-D	66-77	21 teeth, 4 speed Top-Loader	\$13 <sup>95</sup> EA	1)\$8 <sup>95</sup> 5)\$6 <sup>95</sup> 10)\$5 <sup>95</sup>

### SPEEDOMETER GEAR RETAINING CLIP



Secures speedometer cable gear to the end of the cable.

SKU	Fits	List	Dealer Price
C1DZ-17292-A	66-77	\$1 <sup>95</sup> EA	1)\$1 <sup>00</sup>

## TRUNK COMPARTMENT

### BRONCO JACK STRAP



Designed to hold jack. Available in either black painted stamped metal or rust-proof, 304 stainless steel for extra strength and corrosion resistance.

SKU	Fits	Description	List	Dealer Price
C6TZ-17A012-A	66-77	Black	\$12 <sup>95</sup> EA	1) \$8 <sup>50</sup> 10) \$7 <sup>80</sup> 25) \$6 <sup>80</sup>
C6TZ-17A012-S	66-77	Stainless	\$18 <sup>95</sup> EA	1) \$12 <sup>35</sup> 10) \$11 <sup>40</sup> 25) \$9 <sup>95</sup>

### SPARE TIRE HOLD DOWN PLATE

Mounting plate for your spare tire securely.



C8TZ-1424-A  
66-77: Bronco, zinc

List	Dealer Price
\$8 <sup>95</sup> EA	1) \$5 <sup>95</sup> 5) \$5 <sup>75</sup> 10) \$5 <sup>25</sup> 25) \$4 <sup>50</sup>



C8TZ-1424-S  
66-77: Bronco, stainless

List	Dealer Price
\$11 <sup>95</sup> EA	1) \$7 <sup>80</sup> 5) \$7 <sup>50</sup> 10) \$7 <sup>25</sup> 25) \$6 <sup>25</sup>

### BRONCO SPARE TIRE MOUNTING KIT



Spare tire plate, bracket and wingnut. Nice copies of the originals. Finished either zinc plated or in polished 304 stainless steel for extra corrosion protection.

SKU	Fits	Desc	List	Dealer Price
C8TZ-1424/62-K	66-77	Zinc	\$19 <sup>95</sup> SE	1) \$12 <sup>95</sup> 5) \$12 <sup>50</sup> 10) \$11 <sup>95</sup> 25) \$9 <sup>95</sup>
C8TZ-1424/62-SK	66-77	Stainless	\$29 <sup>95</sup> SE	1) \$19 <sup>50</sup> 5) \$18 <sup>95</sup> 10) \$17 <sup>95</sup> 25) \$15 <sup>60</sup>

### SPARE TIRE WING NUT



Spare tire wingnut. Nice copies of the originals. Finished either zinc plated or in polished 304 stainless steel for extra corrosion protection.

SKU	Fits	Description	List	Dealer Price
C8TZ-1462-A	66-77	Zinc	\$13 <sup>95</sup> EA	1) \$8 <sup>95</sup> 5) \$8 <sup>75</sup> 10) \$7 <sup>95</sup> 25) \$6 <sup>95</sup>
C8TZ-1462-S	66-77	Stainless	\$18 <sup>95</sup> EA	1) \$12 <sup>35</sup> 5) \$11 <sup>95</sup> 10) \$11 <sup>40</sup> 25) \$9 <sup>95</sup>

## WIPERS

### WINDSHIELD WASHER PUMP

Original style washer pumps made to last.



C4AZ-17664-A  
66-67: 1 speed

List	Dealer Price
\$37 <sup>50</sup> EA	1) \$24 <sup>95</sup> 5) \$21 <sup>95</sup>



E0AZ-17664-A  
71-77: 2 speed

List	Dealer Price
\$39 <sup>95</sup> EA	1) \$24 <sup>95</sup> 5) \$21 <sup>95</sup>





**66-76 Bronco**

## **BILLET FUEL CAPS**



### **BILLET FUEL CAPS**

Built from solid billet aluminum, these durable fuel caps feature a smooth polish surface with a tough outer grip. Available with a shallow cup design for 66-70 Broncos, or a deep cup design for 71-76 Broncos.



## **REMOVABLE DOOR HINGE KIT**



Kit includes: 4 removable style door hinges, 2 quick-release door check brackets, 2 nylon web door straps with stainless anchors, and all the hardware needed to convert your Bronco.



**66-77 Bronco**

## **STAINLESS STEEL, REMOVABLE DOOR HINGE KIT**

**DRAKE OFF ROAD™**  
**1966-77 BRONCO PARTS CATALOG**

© Copyright 2009-2010 Drake Automotive Group

**Prices are subject to change without notice.**